

Product Name: Dlx5 Rabbit Monoclonal Antibody**Catalog #: AMRe86665**

For research use only.

Summary

| | |
|----------------------|--|
| Description | Recombinant rabbit monoclonal antibody |
| Host | Rabbit |
| Application | WB,IHC,ICC/IF |
| Reactivity | Human,Mouse,Rat |
| Conjugation | Unconjugated |
| Modification | Unmodified |
| Isotype | IgG |
| Clonality | Monoclonal |
| Form | Liquid |
| Concentration | |
| Storage | Aliquot and store at -20°C (valid for 12 months). Avoid freeze/thaw cycles. |
| Shipping | Ice bags |
| Buffer | Supplied in 50mM Tris-Glycine(pH 7.4), 0.15M NaCl, 40% Glycerol, 0.01% sodium azide and 0.05% protective protein. Stable for 12 months from date of receipt. |
| Purification | Affinity Purification |

Application

| | |
|-------------------------|---|
| Dilution Ratio | WB 1:1000-1:5000,IHC 1:200-1:1000,ICC/IF 1:500-1:1000 |
| Molecular Weight | Calculated MW:32 kDa; Observed MW:32 kDa |

Antigen Information

| | |
|--------------------------|-----------------------------------|
| Gene Name | Dlx5 |
| Alternative Names | SHFM1D |
| Gene ID | 1749 |
| SwissProt ID | P56178 |
| Immunogen | A synthetic peptide of human Dlx5 |

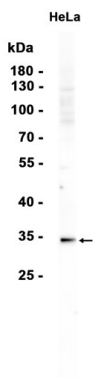
Background

This gene encodes a member of a homeobox transcription factor gene family similar to the Drosophila distal-less gene. The encoded protein may play a role in bone development and fracture healing. Mutation in this gene, which is located in a tail-to-

tail configuration with another member of the family on the long arm of chromosome 7, may be associated with split-hand/split-foot malformation. [provided by RefSeq, Jul 2008]

Research Area

Image Data



Western blot analysis of extracts from HeLa cells using Dlx5 Rabbit Monoclonal Antibody at 1:1000.