
Product Name: Natriuretic Peptide Receptor B Rabbit Monoclonal Antibody**Catalog #: AMRe86663**

For research use only.

Summary

Description	Recombinant rabbit monoclonal antibody
Host	Rabbit
Application	WB
Reactivity	Human, Mouse, Rat
Conjugation	Unconjugated
Modification	Unmodified
Isotype	IgG
Clonality	Monoclonal
Form	Liquid
Concentration	
Storage	Aliquot and store at -20°C (valid for 12 months). Avoid freeze/thaw cycles.
Shipping	Ice bags
Buffer	Supplied in 50mM Tris-Glycine(pH 7.4), 0.15M NaCl, 40% Glycerol, 0.01% sodium azide and 0.05% protective protein. Stable for 12 months from date of receipt.
Purification	Affinity Purification

Application

Dilution Ratio	WB 1:1000-1:5000
Molecular Weight	Calculated MW:117 kDa; Observed MW:148 kDa

Antigen Information

Gene Name	Natriuretic Peptide Receptor B
Alternative Names	AMDM; ANPb; ECDM; NPRB; SNSK; ANPRB; GUC2B; NPRBi; GUCY2B
Gene ID	4882
SwissProt ID	P20594
Immunogen	A synthetic peptide of human Natriuretic Peptide Receptor B

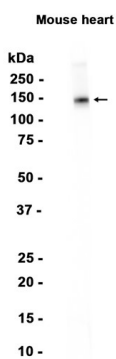
Background

This gene encodes natriuretic peptide receptor B, one of two integral membrane receptors for natriuretic peptides. Both NPR1 and NPR2 contain five functional domains: an extracellular ligand-binding domain, a single membrane-spanning region, and

intracellularly a protein kinase homology domain, a helical hinge region involved in oligomerization, and a carboxyl-terminal guanylyl cyclase catalytic domain. The protein is the primary receptor for C-type natriuretic peptide (CNP), which upon ligand binding exhibits greatly increased guanylyl cyclase activity. Mutations in this gene are the cause of acromesomelic dysplasia Maroteaux type. [provided by RefSeq, Jul 2008]

Research Area

Image Data



Western blot analysis of extracts from Mouse heart tissue using Natriuretic Peptide Receptor B Rabbit Monoclonal Antibody at 1:1000.