

**Product Name: MMP8 Rabbit Monoclonal Antibody****Catalog #: AMRe86661**

For research use only.

**Summary**

<b>Description</b>	Recombinant rabbit monoclonal antibody
<b>Host</b>	Rabbit
<b>Application</b>	WB,IHC,IP
<b>Reactivity</b>	Human,Mouse,Rat
<b>Conjugation</b>	Unconjugated
<b>Modification</b>	Unmodified
<b>Isotype</b>	IgG
<b>Clonality</b>	Monoclonal
<b>Form</b>	Liquid
<b>Concentration</b>	
<b>Storage</b>	Aliquot and store at -20°C (valid for 12 months). Avoid freeze/thaw cycles.
<b>Shipping</b>	Ice bags
<b>Buffer</b>	Supplied in 50mM Tris-Glycine(pH 7.4), 0.15M NaCl, 40% Glycerol, 0.01% sodium azide and 0.05% protective protein. Stable for 12 months from date of receipt.
<b>Purification</b>	Affinity Purification

**Application**

<b>Dilution Ratio</b>	WB 1:1000-1:5000,IHC 1:100-1:200,IP 1:50-1:100
<b>Molecular Weight</b>	Calculated MW:53 kDa; Observed MW:70 kDa

**Antigen Information**

<b>Gene Name</b>	MMP8
<b>Alternative Names</b>	HNC; CLG1; MMP-8; PMNL-CL
<b>Gene ID</b>	4317
<b>SwissProt ID</b>	P22894
<b>Immunogen</b>	A synthetic peptide of human MMP8

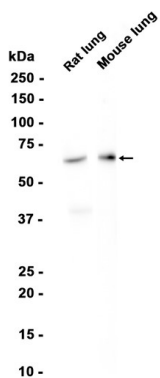
**Background**

This gene encodes a member of the matrix metalloproteinase (MMP) family of proteins. These proteins are involved in the breakdown of extracellular matrix in embryonic development, reproduction, and tissue remodeling, as well as in disease

processes, such as arthritis and metastasis. Proteolysis at different sites on this protein results in multiple active forms of the enzyme with distinct N-termini. This protein functions in the degradation of type I, II and III collagens. The gene is part of a cluster of MMP genes which localize to chromosome 11q22.3. Alternative splicing results in multiple transcript variants. [provided by RefSeq, Jan 2015]

## Research Area

## Image Data



Western blot analysis of extracts from Rat lung , Mouse lung tissue using MMP8 Rabbit Monoclonal Antibody at 1:1000.