
Product Name: CD21 Rabbit Monoclonal Antibody**Catalog #: AMRe86657**

For research use only.

Summary

Description	Recombinant rabbit monoclonal antibody
Host	Rabbit
Application	WB,IHC,ICC/IF,IP
Reactivity	Human
Conjugation	Unconjugated
Modification	Unmodified
Isotype	IgG
Clonality	Monoclonal
Form	Liquid
Concentration	0.09mg/ml. The concentration of this product may be batch-dependent.
Storage	Aliquot and store at -20°C (valid for 12 months). Avoid freeze/thaw cycles.
Shipping	Ice bags
Buffer	Supplied in 50mM Tris-Glycine(pH 7.4), 0.15M NaCl, 40% Glycerol, 0.01% sodium azide and 0.05% protective protein. Stable for 12 months from date of receipt.
Purification	Affinity Purification

Application

Dilution Ratio	WB 1:1000-1:5000,IHC 1:1000-1:5000,ICC/IF 1:20-1:50,IP 1:50-1:200
Molecular Weight	Calculated MW:113 kDa; Observed MW:145 kDa

Antigen Information

Gene Name	CD21
Alternative Names	CR; C3DR; CD21; CVID7; SLEB9
Gene ID	1380
SwissProt ID	P20023
Immunogen	A synthetic peptide of human CD21

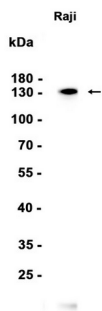
Background

This gene encodes a membrane protein, which functions as a receptor for Epstein-Barr virus (EBV) binding on B and T lymphocytes. Genetic variations in this gene are associated with susceptibility to systemic lupus erythematosus type 9 (SLEB9).

Alternatively spliced transcript variants encoding different isoforms have been found for this gene.[provided by RefSeq, Sep 2009]

Research Area

Image Data



Western blot analysis of extracts from Raji cells using CD21 Rabbit Monoclonal Antibody at 1:10000.