

Product Name: Cytokeratin 13 Rabbit Monoclonal Antibody**Catalog #: AMRe86647**

For research use only.

Summary

Description	Recombinant rabbit monoclonal antibody
Host	Rabbit
Application	WB,IHC,ICC/IF,FC
Reactivity	Human,Mouse
Conjugation	Unconjugated
Modification	Unmodified
Isotype	IgG
Clonality	Monoclonal
Form	Liquid
Concentration	
Storage	Aliquot and store at -20°C (valid for 12 months). Avoid freeze/thaw cycles.
Shipping	Ice bags
Buffer	Supplied in 50mM Tris-Glycine(pH 7.4), 0.15M NaCl, 40% Glycerol, 0.01% sodium azide and 0.05% protective protein. Stable for 12 months from date of receipt.
Purification	Affinity Purification

Application

Dilution Ratio	WB 1:5000-1:50000,IHC 1:100-1:200,ICC/IF 1:200-1:500,FC 1:20-1:50
Molecular Weight	Calculated MW:50 kDa; Observed MW:50 kDa

Antigen Information

Gene Name	Cytokeratin 13
Alternative Names	K13; CK13; WSN2
Gene ID	3860
SwissProt ID	P13646
Immunogen	A synthetic peptide of human Cytokeratin 13

Background

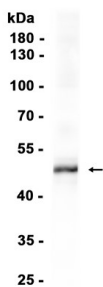
The protein encoded by this gene is a member of the keratin gene family. The keratins are intermediate filament proteins responsible for the structural integrity of epithelial cells and are subdivided into cytokeratins and hair keratins. Most of the type

I cytokeratins consist of acidic proteins which are arranged in pairs of heterotypic keratin chains. This type I cytokeratin is paired with keratin 4 and expressed in the suprabasal layers of non-cornified stratified epithelia. Mutations in this gene and keratin 4 have been associated with the autosomal dominant disorder White Sponge Nevus. The type I cytokeratins are clustered in a region of chromosome 17q21.2. Alternative splicing of this gene results in multiple transcript variants; however, not all variants have been described. [provided by RefSeq, Jul 2008]

Research Area

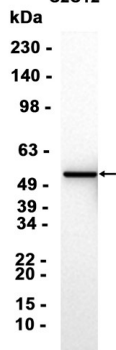
Image Data

Mouse lung



Western blot analysis of extracts from Mouse lung tissue using Cytokeratin 13 Rabbit Monoclonal Antibody at 1:1000.

C2C12



Western blot analysis of extracts from C2C12 cells using AMRe86647 at 1:10000.