
Product Name: alpha/beta Synuclein Rabbit Monoclonal Antibody**Catalog #:** AMRe86637

For research use only.

Summary

Description	Recombinant rabbit monoclonal antibody
Host	Rabbit
Application	WB,ICC/IF,FC
Reactivity	Human,Mouse,Rat
Conjugation	Unconjugated
Modification	Unmodified
Isotype	IgG
Clonality	Monoclonal
Form	Liquid
Concentration	
Storage	Aliquot and store at -20°C (valid for 12 months). Avoid freeze/thaw cycles.
Shipping	Ice bags
Buffer	Supplied in 50mM Tris-Glycine(pH 7.4), 0.15M NaCl, 40% Glycerol, 0.01% sodium azide and 0.05% protective protein. Stable for 12 months from date of receipt.
Purification	Affinity Purification

Application

Dilution Ratio	WB 1:1000-1:5000,ICC/IF 1:50-1:100,FC 1:20-1:50
Molecular Weight	Calculated MW:14 kDa; Observed MW:18 kDa

Antigen Information

Gene Name	alpha/beta Synuclein
Alternative Names	PD1; NACP; PARK1; PARK4
Gene ID	6622
SwissProt ID	P37840
Immunogen	A synthetic peptide of human alpha Synuclein

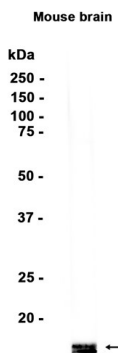
Background

Alpha-synuclein is a member of the synuclein family, which also includes beta- and gamma-synuclein. Synucleins are abundantly expressed in the brain and alpha- and beta-synuclein inhibit phospholipase D2 selectively. SNCA may serve to

integrate presynaptic signaling and membrane trafficking. Defects in SNCA have been implicated in the pathogenesis of Parkinson disease. SNCA peptides are a major component of amyloid plaques in the brains of patients with Alzheimer's disease. Alternatively spliced transcripts encoding different isoforms have been identified for this gene. [provided by RefSeq, Feb 2016]

Research Area

Image Data



Western blot analysis of extracts from Mouse brain tissue using alpha/beta Synuclein Rabbit Monoclonal Antibody at 1:1000.