

**Product Name: Sumo 2/3 Rabbit Monoclonal Antibody****Catalog #: AMRe86636**

For research use only.

**Summary**

<b>Description</b>	Recombinant rabbit monoclonal antibody
<b>Host</b>	Rabbit
<b>Application</b>	WB,IHC
<b>Reactivity</b>	Human
<b>Conjugation</b>	Unconjugated
<b>Modification</b>	Unmodified
<b>Isotype</b>	IgG
<b>Clonality</b>	Monoclonal
<b>Form</b>	Liquid
<b>Concentration</b>	
<b>Storage</b>	Aliquot and store at -20°C (valid for 12 months). Avoid freeze/thaw cycles.
<b>Shipping</b>	Ice bags
<b>Buffer</b>	Supplied in 50mM Tris-Glycine(pH 7.4), 0.15M NaCl, 40% Glycerol, 0.01% sodium azide and 0.05% protective protein. Stable for 12 months from date of receipt.
<b>Purification</b>	Affinity Purification

**Application**

<b>Dilution Ratio</b>	WB 1:1000-1:5000,IHC 1:100-1:200
<b>Molecular Weight</b>	Calculated MW:12 kDa; Observed MW:18 kDa

**Antigen Information**

<b>Gene Name</b>	Sumo 2/3
<b>Alternative Names</b>	SMT3A; Smt3B; SMT3H1; SUMO-3
<b>Gene ID</b>	6612
<b>SwissProt ID</b>	P55854
<b>Immunogen</b>	A synthetic peptide of human Sumo 3

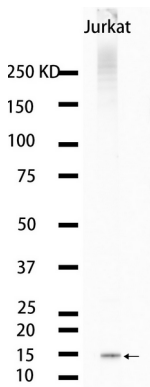
**Background**

This gene encodes a member of the small ubiquitin-related modifier (SUMO) family of eukaryotic proteins. The encoded protein is covalently conjugated to other proteins via a post-translation modification known as sumoylation. Sumoylation may

play a role in a wide variety of cellular processes, including nuclear transport, DNA replication and repair, mitosis, transcriptional regulation, and signal transduction. Alternatively spliced transcript variants encoding distinct proteins have been described. [provided by RefSeq, Feb 2014]

## Research Area

## Image Data



Western blot analysis of extracts from Jurkat cells using Sumo 2/3 Rabbit Monoclonal Antibody at 1:1000.