

Product Name: Rho Rabbit Monoclonal Antibody**Catalog #: AMRe86621**

For research use only.

Summary

Description	Recombinant rabbit monoclonal antibody
Host	Rabbit
Application	WB,IHC,ICC/IF
Reactivity	Human,Mouse,Rat
Conjugation	Unconjugated
Modification	Unmodified
Isotype	IgG
Clonality	Monoclonal
Form	Liquid
Concentration	
Storage	Aliquot and store at -20°C (valid for 12 months). Avoid freeze/thaw cycles.
Shipping	Ice bags
Buffer	Supplied in 50mM Tris-Glycine(pH 7.4), 0.15M NaCl, 40% Glycerol, 0.01% sodium azide and 0.05% protective protein. Stable for 12 months from date of receipt.
Purification	Affinity Purification

Application

Dilution Ratio	WB 1:1000-1:5000,IHC 1:100-1:200,ICC/IF 1:100-1:200
Molecular Weight	Calculated MW:22 kDa; Observed MW:22 kDa

Antigen Information

Gene Name	Rho
Alternative Names	H9; ARH9; ARHC; RHOH9
Gene ID	389
SwissProt ID	P08134
Immunogen	A synthetic peptide of human Rho

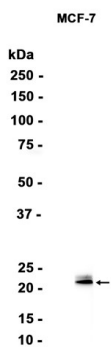
Background

This gene encodes a member of the Rho family of small GTPases, which cycle between inactive GDP-bound and active GTP-bound states and function as molecular switches in signal transduction cascades. Rho proteins promote reorganization of the

actin cytoskeleton and regulate cell shape, attachment, and motility. The protein encoded by this gene is prenylated at its C-terminus, and localizes to the cytoplasm and plasma membrane. It is thought to be important in cell locomotion. Overexpression of this gene is associated with tumor cell proliferation and metastasis. Multiple alternatively spliced variants, encoding the same protein, have been identified. [provided by RefSeq, Jul 2008]

Research Area

Image Data



Western blot analysis of extracts from MCF-7 cells using Rho Rabbit Monoclonal Antibody at 1:1000.