
Product Name: Fibrinogen alpha chain Rabbit Monoclonal Antibody**Catalog #: AMRe86618**

For research use only.

Summary

Description	Recombinant rabbit monoclonal antibody
Host	Rabbit
Application	WB,IHC,ICC/IF,FC,IP
Reactivity	Human,Mouse,Rat
Conjugation	Unconjugated
Modification	Unmodified
Isotype	IgG
Clonality	Monoclonal
Form	Liquid
Concentration	0.09mg/ml. The concentration of this product may be batch-dependent.
Storage	Aliquot and store at -20°C (valid for 12 months). Avoid freeze/thaw cycles.
Shipping	Ice bags
Buffer	Supplied in 50mM Tris-Glycine(pH 7.4), 0.15M NaCl, 40% Glycerol, 0.01% sodium azide and 0.05% protective protein. Stable for 12 months from date of receipt.
Purification	Affinity Purification

Application

Dilution Ratio	WB 1:1000-1:5000,IHC 1:500-1:2000,ICC/IF 1:20-1:50,FC 1:20-1:50,IP 1:50-1:100
Molecular Weight	Calculated MW:95 kDa; Observed MW:110 kDa

Antigen Information

Gene Name	Fibrinogen alpha chain
Alternative Names	Fib2
Gene ID	2243
SwissProt ID	P02671
Immunogen	A synthetic peptide of human Fibrinogen alpha chain

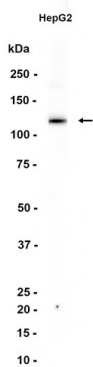
Background

This gene encodes the alpha subunit of the coagulation factor fibrinogen, which is a component of the blood clot. Following vascular injury, the encoded preproprotein is proteolytically processed by thrombin during the conversion of fibrinogen to

fibrin. Mutations in this gene lead to several disorders, including dysfibrinogenemia, hypofibrinogenemia, afibrinogenemia and renal amyloidosis. Alternative splicing results in multiple transcript variants, at least one of which encodes an isoform that undergoes proteolytic processing. [provided by RefSeq, Jan 2016]

Research Area

Image Data



Western blot analysis of extracts from HepG2 cells using Fibrinogen alpha chain Rabbit Monoclonal Antibody at 1:1000.