
Product Name: TOMM40 Rabbit Monoclonal Antibody**Catalog #: AMRe86617**

For research use only.

Summary

Description	Recombinant rabbit monoclonal antibody
Host	Rabbit
Application	WB,IHC,ICC/IF,FC,IP
Reactivity	Human
Conjugation	Unconjugated
Modification	Unmodified
Isotype	IgG
Clonality	Monoclonal
Form	Liquid
Concentration	
Storage	Aliquot and store at -20°C (valid for 12 months). Avoid freeze/thaw cycles.
Shipping	Ice bags
Buffer	Supplied in 50mM Tris-Glycine(pH 7.4), 0.15M NaCl, 40% Glycerol, 0.01% sodium azide and 0.05% protective protein. Stable for 12 months from date of receipt.
Purification	Affinity Purification

Application

Dilution Ratio	WB 1:1000-1:5000,IHC 1:200-1:500,ICC/IF 1:100-1:200,FC 1:200-1:500,IP 1:20-1:50
Molecular Weight	Calculated MW:38 kDa; Observed MW:38 kDa

Antigen Information

Gene Name	TOMM40
Alternative Names	TOM40; PEREC1; C19orf1; PER-EC1; D19S1177E
Gene ID	10452
SwissProt ID	O96008
Immunogen	A synthetic peptide of human TOMM40

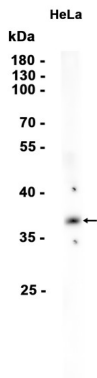
Background

The protein encoded by this gene is localized in the outer membrane of the mitochondria. It is the channel-forming subunit of the translocase of the mitochondrial outer membrane (TOM) complex that is essential for import of protein precursors into

mitochondria. Alternatively spliced transcript variants have been found for this gene. [provided by RefSeq, Aug 2015]

Research Area

Image Data



Western blot analysis of extracts from HeLa cells using TOMM40 Rabbit Monoclonal Antibody at 1:1000.