

Product Name: PSMD14 Rabbit Monoclonal Antibody**Catalog #: AMRe86612**

For research use only.

Summary

Description	Recombinant rabbit monoclonal antibody
Host	Rabbit
Application	WB,IHC,ICC/IF
Reactivity	Human,Mouse,Rat
Conjugation	Unconjugated
Modification	Unmodified
Isotype	IgG
Clonality	Monoclonal
Form	Liquid
Concentration	
Storage	Aliquot and store at -20°C (valid for 12 months). Avoid freeze/thaw cycles.
Shipping	Ice bags
Buffer	Supplied in 50mM Tris-Glycine(pH 7.4), 0.15M NaCl, 40% Glycerol, 0.01% sodium azide and 0.05% protective protein. Stable for 12 months from date of receipt.
Purification	Affinity Purification

Application

Dilution Ratio	WB 1:1000-1:5000,IHC 1:200-1:1000,ICC/IF 1:200-1:1000
Molecular Weight	Calculated MW:35 kDa; Observed MW:35 kDa

Antigen Information

Gene Name	PSMD14
Alternative Names	PAD1; POH1; RPN11
Gene ID	10213
SwissProt ID	O00487
Immunogen	A synthetic peptide of human PSMD14

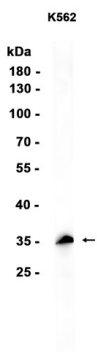
Background

This gene encodes a component of the 26S proteasome. The 26S proteasome is a large multiprotein complex that catalyzes the degradation of ubiquitinated intracellular proteins. The encoded protein is a component of the 19S regulatory cap complex of

the 26S proteasome and mediates substrate deubiquitination. A pseudogene of this gene is also located on the long arm of chromosome 2. [provided by RefSeq, Feb 2012]

Research Area

Image Data



Western blot analysis of extracts from K562 cells using PSMD14 Rabbit Monoclonal Antibody at 1:1000.