

---

**Product Name: CD19 Rabbit Monoclonal Antibody****Catalog #: AMRe86602**

For research use only.

**Summary**

<b>Description</b>	Recombinant rabbit monoclonal antibody
<b>Host</b>	Rabbit
<b>Application</b>	WB,IHC,ICC/IF,FC
<b>Reactivity</b>	Human
<b>Conjugation</b>	Unconjugated
<b>Modification</b>	Unmodified
<b>Isotype</b>	IgG
<b>Clonality</b>	Monoclonal
<b>Form</b>	Liquid
<b>Concentration</b>	
<b>Storage</b>	Aliquot and store at -20°C (valid for 12 months). Avoid freeze/thaw cycles.
<b>Shipping</b>	Ice bags
<b>Buffer</b>	Supplied in 50mM Tris-Glycine(pH 7.4), 0.15M NaCl, 40% Glycerol, 0.01% sodium azide and 0.05% protective protein. Stable for 12 months from date of receipt.
<b>Purification</b>	Affinity Purification

**Application**

<b>Dilution Ratio</b>	WB 1:1000-1:5000,IHC 1:200-1:500,ICC/IF 1:200-1:1000,FC 1:500-1:1000
<b>Molecular Weight</b>	Calculated MW:61 kDa; Observed MW:90 kDa

**Antigen Information**

<b>Gene Name</b>	CD19
<b>Alternative Names</b>	B4; CVID3
<b>Gene ID</b>	930
<b>SwissProt ID</b>	P15391
<b>Immunogen</b>	A synthetic peptide of human CD19

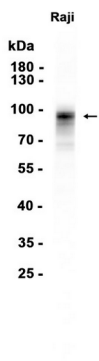
**Background**

Lymphocytes proliferate and differentiate in response to various concentrations of different antigens. The ability of the B cell to respond in a specific, yet sensitive manner to the various antigens is achieved with the use of low-affinity antigen receptors.

This gene encodes a cell surface molecule which assembles with the antigen receptor of B lymphocytes in order to decrease the threshold for antigen receptor-dependent stimulation. [provided by RefSeq, Jul 2008]

## Research Area

## Image Data



Western blot analysis of extracts from Raji cells using CD19 Rabbit Monoclonal Antibody at 1:1000.