

---

**Product Name: C1QA Rabbit Monoclonal Antibody****Catalog #: AMRe86600**

For research use only.

**Summary**

<b>Description</b>	Recombinant rabbit monoclonal antibody
<b>Host</b>	Rabbit
<b>Application</b>	WB,IHC
<b>Reactivity</b>	Human,Rat
<b>Conjugation</b>	Unconjugated
<b>Modification</b>	Unmodified
<b>Isotype</b>	IgG
<b>Clonality</b>	Monoclonal
<b>Form</b>	Liquid
<b>Concentration</b>	2.4mg/ml. The concentration of this product may be batch-dependent.
<b>Storage</b>	Aliquot and store at -20°C (valid for 12 months). Avoid freeze/thaw cycles.
<b>Shipping</b>	Ice bags
<b>Buffer</b>	Supplied in 50mM Tris-Glycine(pH 7.4), 0.15M NaCl, 40% Glycerol, 0.01% sodium azide and 0.05% protective protein. Stable for 12 months from date of receipt.
<b>Purification</b>	Affinity Purification

**Application**

<b>Dilution Ratio</b>	WB 1:1000-1:5000,IHC 1:200-1:1000
<b>Molecular Weight</b>	Calculated MW:26 kDa; Observed MW:26 kDa

**Antigen Information**

<b>Gene Name</b>	C1QA
<b>Alternative Names</b>	Complement C1q subcomponent subunit A
<b>Gene ID</b>	712
<b>SwissProt ID</b>	P02745
<b>Immunogen</b>	Recombinant protein of human C1QA

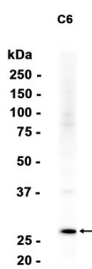
**Background**

This gene encodes the A-chain polypeptide of serum complement subcomponent C1q, which associates with C1r and C1s to yield the first component of the serum complement system. C1q deficiency is associated with lupus erythematosus and

glomerulonephritis. C1q is composed of 18 polypeptide chains which include 6 A-chains, 6 B-chains, and 6 C-chains. Each chain contains an N-terminal collagen-like region and a C-terminal C1q globular domain. Alternate splicing results in multiple transcript variants. [provided by RefSeq, Nov 2016]

## Research Area

## Image Data



Western blot analysis of extracts from C6 cells using C1QA Rabbit Monoclonal Antibody at 1:1000.