
Product Name: SMC3 Rabbit Monoclonal Antibody**Catalog #: AMRe86591**

For research use only.

Summary

Description	Recombinant rabbit monoclonal antibody
Host	Rabbit
Application	WB,IHC
Reactivity	Human,Mouse,Rat
Conjugation	Unconjugated
Modification	Unmodified
Isotype	IgG
Clonality	Monoclonal
Form	Liquid
Concentration	
Storage	Aliquot and store at -20°C (valid for 12 months). Avoid freeze/thaw cycles.
Shipping	Ice bags
Buffer	Supplied in 50mM Tris-Glycine(pH 7.4), 0.15M NaCl, 40% Glycerol, 0.01% sodium azide and 0.05% protective protein. Stable for 12 months from date of receipt.
Purification	Affinity Purification

Application

Dilution Ratio	WB 1:1000-1:5000,IHC 1:100-1:200
Molecular Weight	Calculated MW:142 kDa; Observed MW:142 kDa

Antigen Information

Gene Name	SMC3
Alternative Names	BAM; BMH; HCAP; CDLS3; CSPG6; SMC3L1
Gene ID	9126, 13006, 29486
SwissProt ID	Q9UQE7, Q9CW03, P97690
Immunogen	A synthetic peptide of human SMC3

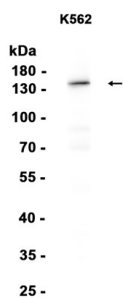
Background

This gene belongs to the SMC3 subfamily of SMC proteins. The encoded protein occurs in certain cell types as either an intracellular, nuclear protein or a secreted protein. The nuclear form, known as structural maintenance of chromosomes 3, is a

component of the multimeric cohesin complex that holds together sister chromatids during mitosis, enabling proper chromosome segregation. Post-translational modification of the encoded protein by the addition of chondroitin sulfate chains gives rise to the secreted proteoglycan bamacan, an abundant basement membrane protein. [provided by RefSeq, Jul 2008]

Research Area

Image Data



Western blot analysis of extracts from K562 cells using SMC3 Rabbit Monoclonal Antibody at 1:1000.