
Product Name: SEPT7 Rabbit Monoclonal Antibody**Catalog #: AMRe86589**

For research use only.

Summary

Description	Recombinant rabbit monoclonal antibody
Host	Rabbit
Application	WB,ICC/IF
Reactivity	Human,Mouse,Rat
Conjugation	Unconjugated
Modification	Unmodified
Isotype	IgG
Clonality	Monoclonal
Form	Liquid
Concentration	
Storage	Aliquot and store at -20°C (valid for 12 months). Avoid freeze/thaw cycles.
Shipping	Ice bags
Buffer	Supplied in 50mM Tris-Glycine(pH 7.4), 0.15M NaCl, 40% Glycerol, 0.01% sodium azide and 0.05% protective protein. Stable for 12 months from date of receipt.
Purification	Affinity Purification

Application

Dilution Ratio	WB 1:1000-1:5000,ICC/IF 1:50-1:100
Molecular Weight	Calculated MW:51 kDa; Observed MW:51 kDa

Antigen Information

Gene Name	CDC3
Alternative Names	CDC3; CDC10; SEPT7A; NBLA02942
Gene ID	989
SwissProt ID	Q16181
Immunogen	Recombinant protein of human SEPT7

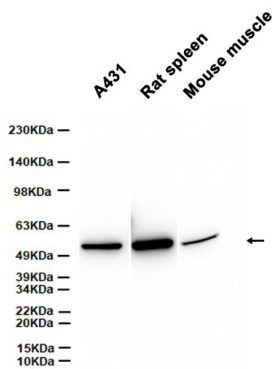
Background

This gene encodes a protein that is highly similar to the CDC10 protein of *Saccharomyces cerevisiae*. The protein also shares similarity with Diff 6 of *Drosophila* and with H5 of mouse. Each of these similar proteins, including the yeast CDC10, contains a

GTP-binding motif. The yeast CDC10 protein is a structural component of the 10 nm filament which lies inside the cytoplasmic membrane and is essential for cytokinesis. This human protein functions in gliomagenesis and in the suppression of glioma cell growth, and it is required for the association of centromere-associated protein E with the kinetochore. Alternative splicing results in multiple transcript variants. Several related pseudogenes have been identified on chromosomes 5, 7, 9, 10, 11, 14, 17 and 19. [provided by RefSeq, Jul 2011]

Research Area

Image Data



Western blot analysis of extracts from A431 cells and Rat spleen, Mouse muscle tissue using SEPT7 Rabbit Monoclonal Antibody at 1:1000.