
Product Name: Cripto1 Rabbit Monoclonal Antibody**Catalog #: AMRe86584**

For research use only.

Summary

Description	Recombinant rabbit monoclonal antibody
Host	Rabbit
Application	WB,IP
Reactivity	Human
Conjugation	Unconjugated
Modification	Unmodified
Isotype	IgG
Clonality	Monoclonal
Form	Liquid
Concentration	
Storage	Aliquot and store at -20°C (valid for 12 months). Avoid freeze/thaw cycles.
Shipping	Ice bags
Buffer	Supplied in 50mM Tris-Glycine(pH 7.4), 0.15M NaCl, 40% Glycerol, 0.01% sodium azide and 0.05% protective protein. Stable for 12 months from date of receipt.
Purification	Affinity Purification

Application

Dilution Ratio	WB 1:500-1:2000,IP 1:20-1:50
Molecular Weight	Calculated MW:21 kDa; Observed MW:18, 20 kDa

Antigen Information

Gene Name	Cripto1
Alternative Names	V1S4; TCRGV4
Gene ID	6977
SwissProt ID	P13385
Immunogen	Recombinant protein of human Cripto1

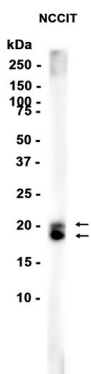
Background

GPI-anchored cell membrane protein involved in Nodal signaling. Cell-associated TDGF1 acts as a Nodal coreceptor in cis. Shedding of TDGF1 by TMEM8A modulates Nodal signaling by allowing soluble TDGF1 to act as a Nodal coreceptor on other

cells (PubMed:27881714). Could play a role in the determination of the epiblastic cells that subsequently give rise to the mesoderm (PubMed:11909953).2 PublicationsGO - Molecular functioni

Research Area

Image Data



Western blot analysis of extracts from NCCIT cells using Cripto1 Rabbit Monoclonal Antibody at 1:1000.