

---

**Product Name: MMP9 Rabbit Monoclonal Antibody****Catalog #: AMRe86583**

For research use only.

**Summary**

<b>Description</b>	Recombinant rabbit monoclonal antibody
<b>Host</b>	Rabbit
<b>Application</b>	WB,IHC,IP
<b>Reactivity</b>	Mouse,Rat
<b>Conjugation</b>	Unconjugated
<b>Modification</b>	Unmodified
<b>Isotype</b>	IgG
<b>Clonality</b>	Monoclonal
<b>Form</b>	Liquid
<b>Concentration</b>	0.1mg/ml. The concentration of this product may be batch-dependent.
<b>Storage</b>	Aliquot and store at -20°C (valid for 12 months). Avoid freeze/thaw cycles.
<b>Shipping</b>	Ice bags
<b>Buffer</b>	Supplied in 50mM Tris-Glycine(pH 7.4), 0.15M NaCl, 40% Glycerol, 0.01% sodium azide and 0.05% protective protein. Stable for 12 months from date of receipt.
<b>Purification</b>	Affinity Purification

**Application**

<b>Dilution Ratio</b>	WB 1:500-1:2000,IHC 1:1000-1:5000,IP 1:20-1:50
<b>Molecular Weight</b>	Calculated MW:81 kDa; Observed MW:92 kDa

**Antigen Information**

<b>Gene Name</b>	MMP9
<b>Alternative Names</b>	Clg4b; Gel B; MMP-9; B/MMP9; AW743869; pro-MMP-9
<b>Gene ID</b>	17395
<b>SwissProt ID</b>	P41245
<b>Immunogen</b>	Recombinant protein of mouse MMP9

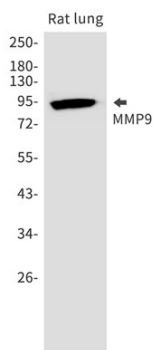
**Background**

This gene encodes a member of the matrix metalloproteinase family of extracellular matrix-degrading enzymes that are involved in tissue remodeling, wound repair, progression of atherosclerosis and tumor invasion. The encoded preproprotein

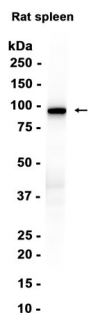
undergoes proteolytic processing to generate a mature, zinc-dependent endopeptidase enzyme that degrades collagens of type IV, V and XI, and elastin. Mice lacking the encoded protein exhibit an abnormal pattern of skeletal growth plate vascularization and ossification, reduced keratinocyte hyperproliferation at all neoplastic stages, a decreased incidence of invasive tumors, and resistance to experimental autoimmune encephalomyelitis. [provided by RefSeq, Feb 2016]

## Research Area

## Image Data



Western blot detection of MMP9 in Rat lung cell lysates using MMP9 antibody.



Western blot analysis of extracts from Rat spleen tissue using AMRe86583 at 1:1000.