
Product Name: Kininogen 1 Rabbit Monoclonal Antibody**Catalog #: AMRe86582**

For research use only.

Summary

Description	Recombinant rabbit monoclonal antibody
Host	Rabbit
Application	WB,IHC,IP
Reactivity	Human
Conjugation	Unconjugated
Modification	Unmodified
Isotype	IgG
Clonality	Monoclonal
Form	Liquid
Concentration	
Storage	Aliquot and store at -20°C (valid for 12 months). Avoid freeze/thaw cycles.
Shipping	Ice bags
Buffer	Supplied in 50mM Tris-Glycine(pH 7.4), 0.15M NaCl, 40% Glycerol, 0.01% sodium azide and 0.05% protective protein. Stable for 12 months from date of receipt.
Purification	Affinity Purification

Application

Dilution Ratio	WB 1:2000-1:20000,IHC 1:100-1:200,IP 1:10-1:100
Molecular Weight	Calculated MW:72 kDa; Observed MW:

Antigen Information

Gene Name	Kininogen 1
Alternative Names	BK; BDK; KNG
Gene ID	3827
SwissProt ID	P01042
Immunogen	A synthetic peptide of human Kininogen 1

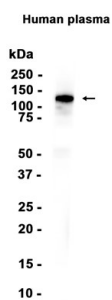
Background

This gene uses alternative splicing to generate two different proteins- high molecular weight kininogen (HMWK) and low molecular weight kininogen (LMWK). HMWK is essential for blood coagulation and assembly of the kallikrein-kinin system.

Also, bradykinin, a peptide causing numerous physiological effects, is released from HMWK. Bradykinin also functions as an antimicrobial peptide with antibacterial and antifungal activity. In contrast to HMWK, LMWK is not involved in blood coagulation. Three transcript variants encoding different isoforms have been found for this gene.[provided by RefSeq, Nov 2014]

Research Area

Image Data



Western blot analysis of extracts from Human plasma tissue using Kininogen 1 Rabbit Monoclonal Antibody at 1:100000.