
Product Name: Ribophorin I Rabbit Monoclonal Antibody**Catalog #: AMRe86569**

For research use only.

Summary

Description	Recombinant rabbit monoclonal antibody
Host	Rabbit
Application	WB,IHC,ICC/IF,FC
Reactivity	Human,Rat
Conjugation	Unconjugated
Modification	Unmodified
Isotype	IgG
Clonality	Monoclonal
Form	Liquid
Concentration	
Storage	Aliquot and store at -20°C (valid for 12 months). Avoid freeze/thaw cycles.
Shipping	Ice bags
Buffer	Supplied in 50mM Tris-Glycine(pH 7.4), 0.15M NaCl, 40% Glycerol, 0.01% sodium azide and 0.05% protective protein. Stable for 12 months from date of receipt.
Purification	Affinity Purification

Application

Dilution Ratio	WB 1:500-1:2000,IHC 1:200-1:500,ICC/IF 1:100-1:200,FC 1:50-1:200
Molecular Weight	Calculated MW:69 kDa; Observed MW:69 kDa

Antigen Information

Gene Name	Ribophorin I
Alternative Names	OST1; RBPH1
Gene ID	6184
SwissProt ID	P04843
Immunogen	A synthetic peptide of human Ribophorin I

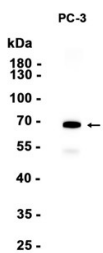
Background

This gene encodes a type I integral membrane protein found only in the rough endoplasmic reticulum. The encoded protein is part of an N-oligosaccharyl transferase complex that links high mannose oligosaccharides to asparagine residues found in the

Asn-X-Ser/Thr consensus motif of nascent polypeptide chains. This protein forms part of the regulatory subunit of the 26S proteasome and may mediate binding of ubiquitin-like domains to this proteasome. [provided by RefSeq, Jul 2008]

Research Area

Image Data



Western blot analysis of extracts from PC-3 cells using Ribophorin I Rabbit Monoclonal Antibody at 1:10000.