

Product Name: Angiotensinogen Rabbit Monoclonal Antibody**Catalog #: AMRe86564**

For research use only.

Summary

Description	Recombinant rabbit monoclonal antibody
Host	Rabbit
Application	WB, ICC/IF, IP
Reactivity	Human
Conjugation	Unconjugated
Modification	Unmodified
Isotype	IgG
Clonality	Monoclonal
Form	Liquid
Concentration	
Storage	Aliquot and store at -20°C (valid for 12 months). Avoid freeze/thaw cycles.
Shipping	Ice bags
Buffer	Supplied in 50mM Tris-Glycine(pH 7.4), 0.15M NaCl, 40% Glycerol, 0.01% sodium azide and 0.05% protective protein. Stable for 12 months from date of receipt.
Purification	Affinity Purification

Application

Dilution Ratio	WB 1:1000-1:5000, ICC/IF 1:100-1:200, IP 1:10-1:100
Molecular Weight	Calculated MW:53 kDa; Observed MW:53 kDa

Antigen Information

Gene Name	Angiotensinogen
Alternative Names	ANHU; hFLT1; SERPINA8
Gene ID	183
SwissProt ID	P01019
Immunogen	A synthetic peptide of human Angiotensinogen

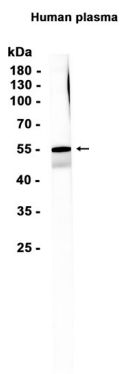
Background

The protein encoded by this gene, pre-angiotensinogen or angiotensinogen precursor, is expressed in the liver and is cleaved by the enzyme renin in response to lowered blood pressure. The resulting product, angiotensin I, is then cleaved by angiotensin

converting enzyme (ACE) to generate the physiologically active enzyme angiotensin II. The protein is involved in maintaining blood pressure, body fluid and electrolyte homeostasis, and in the pathogenesis of essential hypertension and preeclampsia. Mutations in this gene are associated with susceptibility to essential hypertension, and can cause renal tubular dysgenesis, a severe disorder of renal tubular development. Defects in this gene have also been associated with non-familial structural atrial fibrillation, and inflammatory bowel disease. [provided by RefSeq, Nov 2019]

Research Area

Image Data



Western blot analysis of extracts from Human plasma tissue using Angiotensinogen Rabbit Monoclonal Antibody at 1:5000.