

---

**Product Name: TPA Tissue Plasminogen Activator Rabbit Monoclonal Antibody****Catalog #: AMRe86548**

For research use only.

**Summary**

<b>Description</b>	Recombinant rabbit monoclonal antibody
<b>Host</b>	Rabbit
<b>Application</b>	WB,IHC
<b>Reactivity</b>	Human,Mouse,Rat
<b>Conjugation</b>	Unconjugated
<b>Modification</b>	Unmodified
<b>Isotype</b>	IgG
<b>Clonality</b>	Monoclonal
<b>Form</b>	Liquid
<b>Concentration</b>	0.09mg/ml. The concentration of this product may be batch-dependent.
<b>Storage</b>	Aliquot and store at -20°C (valid for 12 months). Avoid freeze/thaw cycles.
<b>Shipping</b>	Ice bags
<b>Buffer</b>	Supplied in 50mM Tris-Glycine(pH 7.4), 0.15M NaCl, 40% Glycerol, 0.01% sodium azide and 0.05% protective protein. Stable for 12 months from date of receipt.
<b>Purification</b>	Affinity Purification

**Application**

<b>Dilution Ratio</b>	WB 1:1000-1:5000,IHC 1:100-1:1000
<b>Molecular Weight</b>	Calculated MW:63 kDa; Observed MW:63 kDa

**Antigen Information**

<b>Gene Name</b>	TPA Tissue Plasminogen Activator
<b>Alternative Names</b>	TPA; T-PA
<b>Gene ID</b>	5327
<b>SwissProt ID</b>	P00750
<b>Immunogen</b>	A synthetic peptide of human TPA Tissue Plasminogen Activator

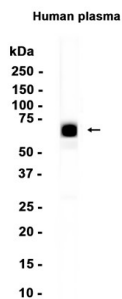
**Background**

This gene encodes tissue-type plasminogen activator, a secreted serine protease that converts the proenzyme plasminogen to plasmin, a fibrinolytic enzyme. The encoded preproprotein is proteolytically processed by plasmin or trypsin to generate heavy

and light chains. These chains associate via disulfide linkages to form the heterodimeric enzyme. This enzyme plays a role in cell migration and tissue remodeling. Increased enzymatic activity causes hyperfibrinolysis, which manifests as excessive bleeding, while decreased activity leads to hypofibrinolysis, which can result in thrombosis or embolism. Alternative splicing of this gene results in multiple transcript variants, at least one of which encodes an isoform that is proteolytically processed. [provided by RefSeq, Jan 2016]

## Research Area

## Image Data



Western blot analysis of extracts from Human plasma tissue using TPA Tissue Plasminogen Activator Rabbit Monoclonal Antibody at 1:1000.