

Product Name: C1QA Rabbit Monoclonal Antibody**Catalog #: AMRe86546**

For research use only.

Summary

Description	Recombinant rabbit monoclonal antibody
Host	Rabbit
Application	WB,IHC
Reactivity	Human
Conjugation	Unconjugated
Modification	Unmodified
Isotype	IgG
Clonality	Monoclonal
Form	Liquid
Concentration	
Storage	Aliquot and store at -20°C (valid for 12 months). Avoid freeze/thaw cycles.
Shipping	Ice bags
Buffer	Supplied in 50mM Tris-Glycine(pH 7.4), 0.15M NaCl, 40% Glycerol, 0.01% sodium azide and 0.05% protective protein. Stable for 12 months from date of receipt.
Purification	Affinity Purification

Application

Dilution Ratio	WB 1:500-1:2000,IHC 1:100-1:200
Molecular Weight	Calculated MW:26 kDa; Observed MW:26 kDa

Antigen Information

Gene Name	C1QA
Alternative Names	Complement C1q subcomponent subunit A
Gene ID	712
SwissProt ID	P02745
Immunogen	A synthetic peptide of human C1QA

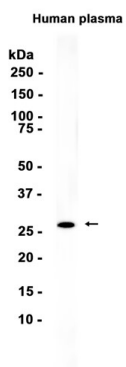
Background

This gene encodes the A-chain polypeptide of serum complement subcomponent C1q, which associates with C1r and C1s to yield the first component of the serum complement system. C1q deficiency is associated with lupus erythematosus and

glomerulonephritis. C1q is composed of 18 polypeptide chains which include 6 A-chains, 6 B-chains, and 6 C-chains. Each chain contains an N-terminal collagen-like region and a C-terminal C1q globular domain. Alternate splicing results in multiple transcript variants. [provided by RefSeq, Nov 2016]

Research Area

Image Data



Western blot analysis of extracts from Human plasma tissue using C1QA Rabbit Monoclonal Antibody at 1:1000.