
Product Name: BTF Rabbit Monoclonal Antibody**Catalog #: AMRe86535**

For research use only.

Summary

Description	Recombinant rabbit monoclonal antibody
Host	Rabbit
Application	WB,IHC,ICC/IF
Reactivity	Human,Mouse,Rat
Conjugation	Unconjugated
Modification	Unmodified
Isotype	IgG
Clonality	Monoclonal
Form	Liquid
Concentration	
Storage	Aliquot and store at -20°C (valid for 12 months). Avoid freeze/thaw cycles.
Shipping	Ice bags
Buffer	Supplied in 50mM Tris-Glycine(pH 7.4), 0.15M NaCl, 40% Glycerol, 0.01% sodium azide and 0.05% protective protein. Stable for 12 months from date of receipt.
Purification	Affinity Purification

Application

Dilution Ratio	WB 1:2000-1:20000,IHC 1:200-1:500,ICC/IF 1:500-1:1000
Molecular Weight	Calculated MW:106 kDa; Observed MW:150 kDa

Antigen Information

Gene Name	BTF
Alternative Names	BTF; bK211L9.1
Gene ID	9774
SwissProt ID	Q9NYF8
Immunogen	A synthetic peptide of human BTF

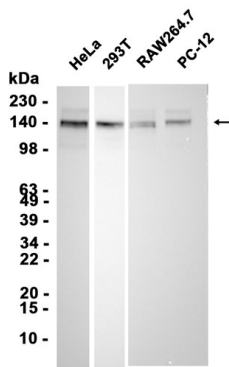
Background

This gene encodes a transcriptional repressor that interacts with several members of the BCL2 family of proteins. Overexpression of this protein induces apoptosis, which can be suppressed by co-expression of BCL2 proteins. The protein

localizes to dot-like structures throughout the nucleus, and redistributes to a zone near the nuclear envelope in cells undergoing apoptosis. Multiple transcript variants encoding different isoforms have been found for this gene. [provided by RefSeq, Jul 2008]

Research Area

Image Data



Western blot analysis of extracts from HeLa, 293T, RAW264.7, PC-12 cells using BTF Rabbit Monoclonal Antibody at 1:5000.