

## Summary

<b>Production Name</b>	EGFR Rabbit Monoclonal Antibody
<b>Description</b>	Rabbit Monoclonal antibody
<b>Host</b>	Rabbit
<b>Application</b>	WB, IHC-P, ICC/IF, FC, IP
<b>Reactivity</b>	Human,Mouse,Rat

## Performance

<b>Conjugation</b>	Unconjugated
<b>Modification</b>	Unmodified
<b>Isotype</b>	IgG
<b>Clonality</b>	Monoclonal
<b>Form</b>	Liquid
<b>Storage</b>	Store at 4°C short term. Aliquot and store at -20°C long term. Avoid freeze/thaw cycles.
<b>Buffer</b>	Supplied in 50mM Tris-Glycine(pH 7.4), 0.15M NaCl, 40% Glycerol, 0.01% sodium azide and 0.05% BSA. Stable for 12 months from date of receipt.
<b>Purification</b>	Affinity Purification

## Immunogen

<b>Gene Name</b>	EGFR
<b>Alternative Names</b>	ERBB; HER1; mENA; ERBB1; PIG61; NISBD2
<b>Gene ID</b>	1956
<b>SwissProt ID</b>	P00533.

## Application

<b>Dilution Ratio</b>	WB: 1:1000-1:5000 IHC-P: 1:100 ICC/IF: 1:200-1:500 FC: 1:20 IP: 1:20
<b>Molecular Weight</b>	Calculated MW:134 kDa; Observed MW:175 kDa

## Background

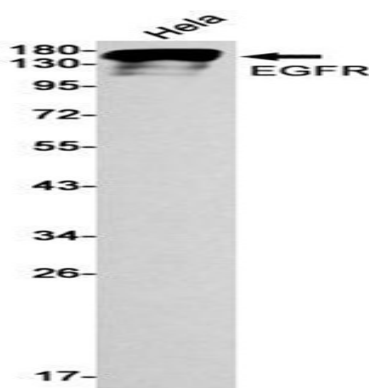
**Product Name: EGFR Rabbit Monoclonal Antibody**  
**Catalog #: AMRe86530**



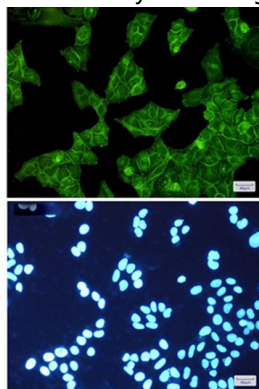
The protein encoded by this gene is a transmembrane glycoprotein that is a member of the protein kinase superfamily. This protein is a receptor for members of the epidermal growth factor family. EGFR is a cell surface protein that binds to epidermal growth factor. Binding of the protein to a ligand induces receptor dimerization and tyrosine autophosphorylation and leads to cell proliferation. Mutations in this gene are associated with lung cancer. [provided by RefSeq, Jun 2016]

## Research Area

## Image Data

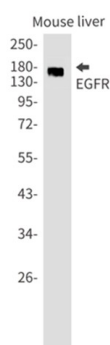


Western blot detection of EGFR in HeLa cell lysates using EGFR antibody(1:1000 diluted).

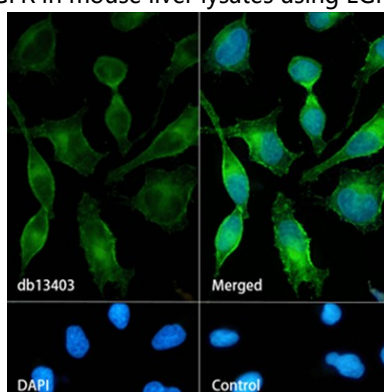


Immunofluorescent analysis of HeLa cells using AMRe86530 antibody (green), and DAPI (blue).

**Product Name: EGFR Rabbit Monoclonal Antibody**  
**Catalog #: AMRe86530**



Western blot analysis of EGFR in mouse liver lysates using EGFR antibody(1:1000 diluted).



Immunofluorescence analysis of Hela cells labelling EGFR with AMRe86530.

## Note

For research use only.