

Product Name: TOMM20 Rabbit Monoclonal Antibody**Catalog #: AMRe86525**

For research use only.

Summary

Description	Recombinant rabbit monoclonal antibody
Host	Rabbit
Application	WB,IHC,ICC/IF,FC
Reactivity	Human,Mouse,Rat
Conjugation	Unconjugated
Modification	Unmodified
Isotype	IgG
Clonality	Monoclonal
Form	Liquid
Concentration	
Storage	Aliquot and store at -20°C (valid for 12 months). Avoid freeze/thaw cycles.
Shipping	Ice bags
Buffer	Supplied in 50mM Tris-Glycine(pH 7.4), 0.15M NaCl, 40% Glycerol, 0.01% sodium azide and 0.05% protective protein. Stable for 12 months from date of receipt.
Purification	Affinity Purification

Application

Dilution Ratio	WB 1:1000-1:5000,IHC 1:50-1:100,ICC/IF 1:100-1:200,FC 1:50-1:100
Molecular Weight	Calculated MW:16 kDa; Observed MW:16 kDa

Antigen Information

Gene Name	TOMM20
Alternative Names	MAS20; MOM19; TOM20
Gene ID	9804
SwissProt ID	Q15388
Immunogen	Recombinant protein of human TOMM20

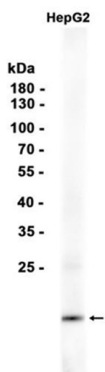
Background

Central component of the receptor complex responsible for the recognition and translocation of cytosolically synthesized mitochondrial preproteins. Together with TOM22 functions as the transit peptide receptor at the surface of the mitochondrion

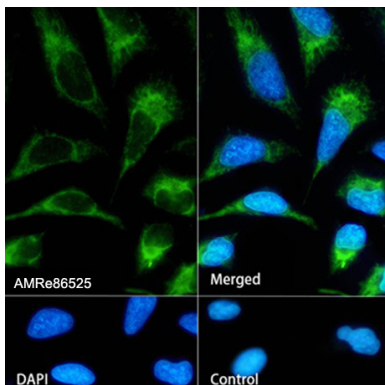
outer membrane and facilitates the movement of preproteins into the TOM40 translocation pore (By similarity). [UniProt]

Research Area

Image Data



Western blot analysis of extracts from HepG2 cells using TOMM20 Rabbit Monoclonal Antibody at 1:1000.



Immunofluorescence analysis of HeLa cells labelling TOMM20 with AMRe86525.