

Product Name: alpha 1 Antitrypsin Rabbit Monoclonal Antibody**Catalog #:** AMRe86512

For research use only.

Summary

Description	Recombinant rabbit monoclonal antibody
Host	Rabbit
Application	WB,IHC,ICC/IF,IP
Reactivity	Human
Conjugation	Unconjugated
Modification	Unmodified
Isotype	IgG
Clonality	Monoclonal
Form	Liquid
Concentration	
Storage	Aliquot and store at -20°C (valid for 12 months). Avoid freeze/thaw cycles.
Shipping	Ice bags
Buffer	Supplied in 50mM Tris-Glycine(pH 7.4), 0.15M NaCl, 40% Glycerol, 0.01% sodium azide and 0.05% protective protein. Stable for 12 months from date of receipt.
Purification	Affinity Purification

Application

Dilution Ratio	WB 1:1000-1:5000,IHC 1:100-1:200,ICC/IF 1:20-1:50,IP 1:20-1:50
Molecular Weight	Calculated MW:46 kDa; Observed MW:55 kDa

Antigen Information

Gene Name	alpha 1 Antitrypsin
Alternative Names	PI; A1A; AAT; PI1; A1AT; nNIF; PRO2275; alpha1AT
Gene ID	5265
SwissProt ID	P01009
Immunogen	Recombinant protein of human alpha 1 Antitrypsin

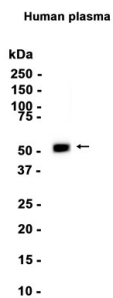
Background

The protein encoded by this gene is secreted and is a serine protease inhibitor whose targets include elastase, plasmin, thrombin, trypsin, chymotrypsin, and plasminogen activator. Defects in this gene can cause emphysema or liver disease.

Several transcript variants encoding the same protein have been found for this gene. [provided by RefSeq, Jul 2008]

Research Area

Image Data



Western blot analysis of extracts from Human plasma tissue using alpha 1 Antitrypsin Rabbit Monoclonal Antibody at 1:100000.