

---

**Product Name: Calbindin Rabbit Monoclonal Antibody****Catalog #: AMRe86508**

For research use only.

**Summary**

<b>Description</b>	Recombinant rabbit monoclonal antibody
<b>Host</b>	Rabbit
<b>Application</b>	WB,IHC,ICC/IF,FC
<b>Reactivity</b>	Human,Mouse,Rat
<b>Conjugation</b>	Unconjugated
<b>Modification</b>	Unmodified
<b>Isotype</b>	IgG
<b>Clonality</b>	Monoclonal
<b>Form</b>	Liquid
<b>Concentration</b>	
<b>Storage</b>	Aliquot and store at -20°C (valid for 12 months). Avoid freeze/thaw cycles.
<b>Shipping</b>	Ice bags
<b>Buffer</b>	Supplied in 50mM Tris-Glycine(pH 7.4), 0.15M NaCl, 40% Glycerol, 0.01% sodium azide and 0.05% protective protein. Stable for 12 months from date of receipt.
<b>Purification</b>	Affinity Purification

**Application**

<b>Dilution Ratio</b>	WB 1:1000-1:5000,IHC 1:200-1:1000,ICC/IF 1:100-1:200,FC 1:50-1:200
<b>Molecular Weight</b>	Calculated MW:30 kDa; Observed MW:30 kDa

**Antigen Information**

<b>Gene Name</b>	Calbindin
<b>Alternative Names</b>	CALB; D-28K
<b>Gene ID</b>	793
<b>SwissProt ID</b>	P05937
<b>Immunogen</b>	A synthetic peptide of human Calbindin

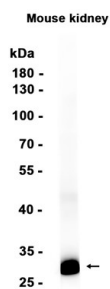
**Background**

The protein encoded by this gene is a member of the calcium-binding protein superfamily that includes calmodulin and troponin C. Originally described as a 27 kDa protein, it is now known to be a 28 kDa protein. It contains four active calcium-

binding domains, and has two modified domains that are thought to have lost their calcium binding capability. This protein is thought to buffer entry of calcium upon stimulation of glutamate receptors. Depletion of this protein was noted in patients with Huntington disease. [provided by RefSeq, Jan 2015]

## Research Area

## Image Data



Western blot analysis of extracts from Mouse kidney tissue using Calbindin Rabbit Monoclonal Antibody at 1:1000.