
Product Name: CDC45L Rabbit Monoclonal Antibody**Catalog #: AMRe86507**

For research use only.

Summary

Description	Recombinant rabbit monoclonal antibody
Host	Rabbit
Application	WB,IHC,ICC/IF
Reactivity	Human,Mouse,Rat
Conjugation	Unconjugated
Modification	Unmodified
Isotype	IgG
Clonality	Monoclonal
Form	Liquid
Concentration	
Storage	Aliquot and store at -20°C (valid for 12 months). Avoid freeze/thaw cycles.
Shipping	Ice bags
Buffer	Supplied in 50mM Tris-Glycine(pH 7.4), 0.15M NaCl, 40% Glycerol, 0.01% sodium azide and 0.05% protective protein. Stable for 12 months from date of receipt.
Purification	Affinity Purification

Application

Dilution Ratio	WB 1:1000-1:5000,IHC 1:100-1:200,ICC/IF 1:100-1:200
Molecular Weight	Calculated MW:66 kDa; Observed MW:66 kDa

Antigen Information

Gene Name	CDC45L
Alternative Names	CDC45L; MGORS7; CDC45L2; PORC-PI-1
Gene ID	8318
SwissProt ID	O75419
Immunogen	A synthetic peptide of human CDC45L

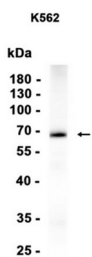
Background

The protein encoded by this gene was identified by its strong similarity with *Saccharomyces cerevisiae* Cdc45, an essential protein required to the initiation of DNA replication. Cdc45 is a member of the highly conserved multiprotein complex

including Cdc6/Cdc18, the minichromosome maintenance proteins (MCMs) and DNA polymerase, which is important for early steps of DNA replication in eukaryotes. This protein has been shown to interact with MCM7 and DNA polymerase alpha. Studies of the similar gene in *Xenopus* suggested that this protein play a pivotal role in the loading of DNA polymerase alpha onto chromatin. Alternate splicing results in multiple transcript variants. [provided by RefSeq, Jul 2013]

Research Area

Image Data



Western blot analysis of extracts from K562 cells using CDC45L Rabbit Monoclonal Antibody at 1:1000.