

Product Name: Fibronectin Rabbit Monoclonal Antibody**Catalog #: AMRe86503**

For research use only.

Summary

Description	Recombinant rabbit monoclonal antibody
Host	Rabbit
Application	WB,IHC,ICC/IF,FC
Reactivity	Human
Conjugation	Unconjugated
Modification	Unmodified
Isotype	IgG
Clonality	Monoclonal
Form	Liquid
Concentration	
Storage	Aliquot and store at -20°C (valid for 12 months). Avoid freeze/thaw cycles.
Shipping	Ice bags
Buffer	Supplied in 50mM Tris-Glycine(pH 7.4), 0.15M NaCl, 40% Glycerol, 0.01% sodium azide and 0.05% protective protein. Stable for 12 months from date of receipt.
Purification	Affinity Purification

Application

Dilution Ratio	WB 1:500-1:2000,IHC 1:200-1:500,ICC/IF 1:100-1:200,FC 1:20-1:50
Molecular Weight	Calculated MW:263 kDa; Observed MW:263 kDa

Antigen Information

Gene Name	Fibronectin
Alternative Names	FN; CIG; FNZ; MSF; ED-B; FINC; GFND; LETS; GFND2
Gene ID	2335
SwissProt ID	P02751
Immunogen	Recombinant protein of human Fibronectin

Background

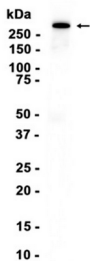
This gene encodes fibronectin, a glycoprotein present in a soluble dimeric form in plasma, and in a dimeric or multimeric form at the cell surface and in extracellular matrix. The encoded preproprotein is proteolytically processed to generate the mature

protein. Fibronectin is involved in cell adhesion and migration processes including embryogenesis, wound healing, blood coagulation, host defense, and metastasis. The gene has three regions subject to alternative splicing, with the potential to produce 20 different transcript variants, at least one of which encodes an isoform that undergoes proteolytic processing. The full-length nature of some variants has not been determined. [provided by RefSeq, Jan 2016]

Research Area

Image Data

Human plasma



Western blot analysis of extracts from Human plasma tissue using Fibronectin Rabbit Monoclonal Antibody at 1:1000.