

Product Name: MUM1 Rabbit Monoclonal Antibody**Catalog #: AMRe86500**

For research use only.

Summary

Description	Recombinant rabbit monoclonal antibody
Host	Rabbit
Application	WB,IHC,ICC/IF,FC,IP
Reactivity	Human
Conjugation	Unconjugated
Modification	Unmodified
Isotype	IgG
Clonality	Monoclonal
Form	Liquid
Concentration	
Storage	Aliquot and store at -20°C (valid for 12 months). Avoid freeze/thaw cycles.
Shipping	Ice bags
Buffer	Supplied in 50mM Tris-Glycine(pH 7.4), 0.15M NaCl, 40% Glycerol, 0.01% sodium azide and 0.05% protective protein. Stable for 12 months from date of receipt.
Purification	Affinity Purification

Application

Dilution Ratio	WB 1:2000-1:20000,IHC 1:200-1:500,ICC/IF 1:200-1:500,FC 1:100-1:1000,IP 1:100-1:500
Molecular Weight	Calculated MW:52 kDa; Observed MW:52 kDa

Antigen Information

Gene Name	MUM1
Alternative Names	MUM1; LSIRF; SHEP8; NF-EM5
Gene ID	3662
SwissProt ID	Q15306
Immunogen	A synthetic peptide of human MUM1

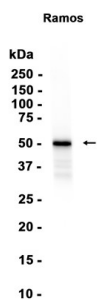
Background

The protein encoded by this gene belongs to the IRF (interferon regulatory factor) family of transcription factors, characterized by an unique tryptophan pentad repeat DNA-binding domain. The IRFs are important in the regulation of interferons in

response to infection by virus, and in the regulation of interferon-inducible genes. This family member is lymphocyte specific and negatively regulates Toll-like-receptor (TLR) signaling that is central to the activation of innate and adaptive immune systems. A chromosomal translocation involving this gene and the IgH locus, t(6;14)(p25;q32), may be a cause of multiple myeloma. Alternatively spliced transcript variants have been found for this gene. [provided by RefSeq, Aug 2010]

Research Area

Image Data



Western blot analysis of extracts from Ramos cells using MUM1 Rabbit Monoclonal Antibody at 1:1000.