
Product Name: ACTL6A Rabbit Monoclonal Antibody**Catalog #: AMRe86499**

For research use only.

Summary

Description	Recombinant rabbit monoclonal antibody
Host	Rabbit
Application	WB,IHC
Reactivity	Human,Mouse,Rat
Conjugation	Unconjugated
Modification	Unmodified
Isotype	IgG
Clonality	Monoclonal
Form	Liquid
Concentration	
Storage	Aliquot and store at -20°C (valid for 12 months). Avoid freeze/thaw cycles.
Shipping	Ice bags
Buffer	Supplied in 50mM Tris-Glycine(pH 7.4), 0.15M NaCl, 40% Glycerol, 0.01% sodium azide and 0.05% protective protein. Stable for 12 months from date of receipt.
Purification	Affinity Purification

Application

Dilution Ratio	WB 1:1000-1:5000,IHC 1:50-1:100
Molecular Weight	Calculated MW:48 kDa; Observed MW:48 kDa

Antigen Information

Gene Name	ACTL6A
Alternative Names	Arp4; ACTL6; BAF53A; INO80K; ARPN-BETA
Gene ID	86
SwissProt ID	O96019
Immunogen	A synthetic peptide of human ACTL6A

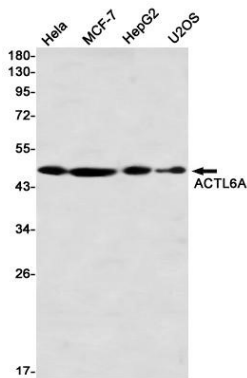
Background

This gene encodes a family member of actin-related proteins (ARPs), which share significant amino acid sequence identity to conventional actins. Both actins and ARPs have an actin fold, which is an ATP-binding cleft, as a common feature. The ARPs are

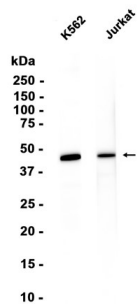
involved in diverse cellular processes, including vesicular transport, spindle orientation, nuclear migration and chromatin remodeling. This gene encodes a 53 kDa subunit protein of the BAF (BRG1/brm-associated factor) complex in mammals, which is functionally related to SWI/SNF complex in *S. cerevisiae* and *Drosophila*; the latter is thought to facilitate transcriptional activation of specific genes by antagonizing chromatin-mediated transcriptional repression. Together with beta-actin, it is required for maximal ATPase activity of BRG1, and for the association of the BAF complex with chromatin/matrix. Three transcript variants that encode two different protein isoforms have been described. [provided by RefSeq, Jul 2008]

Research Area

Image Data



Western blot detection of ACTL6A in HeLa, MCF-7, HepG2, U2OS using ACTL6A antibody (1:1000 diluted).



Western blot analysis of extracts from K562, Jurkat cells using AMRe86499 at 1:1000.