
Product Name: SSRP1 Rabbit Monoclonal Antibody**Catalog #: AMRe86498**

For research use only.

Summary

Description	Recombinant rabbit monoclonal antibody
Host	Rabbit
Application	WB
Reactivity	Human, Mouse, Rat
Conjugation	Unconjugated
Modification	Unmodified
Isotype	IgG
Clonality	Monoclonal
Form	Liquid
Concentration	
Storage	Aliquot and store at -20°C (valid for 12 months). Avoid freeze/thaw cycles.
Shipping	Ice bags
Buffer	Supplied in 50mM Tris-Glycine(pH 7.4), 0.15M NaCl, 40% Glycerol, 0.01% sodium azide and 0.05% protective protein. Stable for 12 months from date of receipt.
Purification	Affinity Purification

Application

Dilution Ratio	WB 1:1000-1:5000
Molecular Weight	Calculated MW:81 kDa; Observed MW:81 kDa

Antigen Information

Gene Name	SSRP1
Alternative Names	FACT; T160; FACT80
Gene ID	6749
SwissProt ID	Q08945
Immunogen	A synthetic peptide of human SSRP1

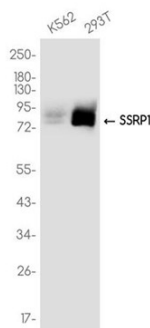
Background

The protein encoded by this gene is a subunit of a heterodimer that, along with SUPT16H, forms chromatin transcriptional elongation factor FACT. FACT interacts specifically with histones H2A/H2B to effect nucleosome disassembly and transcription

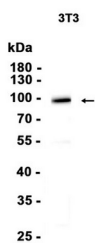
elongation. FACT and cisplatin-damaged DNA may be crucial to the anticancer mechanism of cisplatin. This encoded protein contains a high mobility group box which most likely constitutes the structure recognition element for cisplatin-modified DNA. This protein also functions as a co-activator of the transcriptional activator p63. An alternatively spliced transcript variant of this gene has been described, but its full-length nature is not known. [provided by RefSeq, Jul 2008]

Research Area

Image Data



Western blot analysis of extracts from K562 , 293T cells using SSRP1 Rabbit Monoclonal Antibody at 1:1000.



Western blot analysis of extracts from 3T3 cells using AMRe86498 at 1:1000.