

**Product Name: Progesterone Receptor Rabbit
Monoclonal Antibody
Catalog #: AMRe86497**

Summary

Production Name	Progesterone Receptor Rabbit Monoclonal Antibody
Description	Rabbit Monoclonal antibody
Host	Rabbit
Application	WB, IHC-P, ICC/IF, FC, IP
Reactivity	Human

Performance

Conjugation	Unconjugated
Modification	Unmodified
Isotype	IgG
Clonality	Monoclonal
Form	Liquid
Storage	Store at 4°C short term. Aliquot and store at -20°C long term. Avoid freeze/thaw cycles.
Buffer	Supplied in 50mM Tris-Glycine(pH 7.4), 0.15M NaCl, 40% Glycerol, 0.01% sodium azide and 0.05% protective protein. Stable for 12 months from date of receipt.
Purification	Affinity Purification

Immunogen

Gene Name	Progesterone Receptor
Alternative Names	PR; NR3C3
Gene ID	5241
SwissProt ID	P06401.

Application

Dilution Ratio	WB: 1:1000-1:5000 IHC-P: 1:100-1:200 ICC/IF: 1:20-1:500 FC: 1:200-1:1000 IP: 1:100-1:200
Molecular Weight	Calculated MW:99 kDa; Observed MW:90,118 kDa

**Product Name: Progesterone Receptor Rabbit
Monoclonal Antibody
Catalog #: AMRe86497**

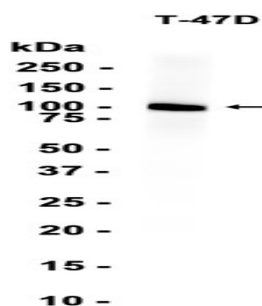


Background

This gene encodes a member of the steroid receptor superfamily. The encoded protein mediates the physiological effects of progesterone, which plays a central role in reproductive events associated with the establishment and maintenance of pregnancy. This gene uses two distinct promoters and translation start sites in the first exon to produce several transcript variants, both protein coding and non-protein coding. Two of the isoforms (A and B) are identical except for an additional 165 amino acids found in the N-terminus of isoform B and mediate their own response genes and physiologic effects with little overlap. [provided by RefSeq, Sep 2015]

Research Area

Image Data



Western blot analysis of extracts from T-47D cells using AMRe86497 at 1:1000.

Note

For research use only.