

Summary

Production Name	CPT1A Rabbit Monoclonal Antibody
Description	Rabbit Monoclonal antibody
Host	Rabbit
Application	WB, IHC-P, FC
Reactivity	Human,Mouse,Rat

Performance

Conjugation	Unconjugated
Modification	Unmodified
Isotype	IgG
Clonality	Monoclonal
Form	Liquid
Storage	Store at 4°C short term. Aliquot and store at -20°C long term. Avoid freeze/thaw cycles.
Buffer	Supplied in 50mM Tris-Glycine(pH 7.4), 0.15M NaCl, 40% Glycerol, 0.01% sodium azide and 0.05% protective protein. Stable for 12 months from date of receipt.
Purification	Affinity Purification

Immunogen

Gene Name	CPT1A
Alternative Names	CPT1; CPT1-L; L-CPT1
Gene ID	1374
SwissProt ID	P50416.

Application

Dilution Ratio	WB: 1:1000 IHC-P: 1:200-1:1000 FC: 1:20-1:50
Molecular Weight	Calculated MW:88 kDa; Observed MW:88 kDa

Background

The mitochondrial oxidation of long-chain fatty acids is initiated by the sequential action of carnitine palmitoyltransferase I

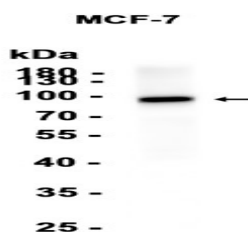
Product Name: CPT1A Rabbit Monoclonal Antibody
Catalog #: AMRe86496



(which is located in the outer membrane and is detergent-labile) and carnitine palmitoyltransferase II (which is located in the inner membrane and is detergent-stable), together with a carnitine-acylcarnitine translocase. CPT I is the key enzyme in the carnitine-dependent transport across the mitochondrial inner membrane and its deficiency results in a decreased rate of fatty acid beta-oxidation. Alternatively spliced transcript variants encoding different isoforms have been found for this gene. [provided by RefSeq, Jul 2008]

Research Area

Image Data



Western blot analysis of extracts from MCF-7 cells using AMRe86496 at 1:1000.

Note

For research use only.