

Product Name: Cpn10 Rabbit Monoclonal Antibody
Catalog #: AMRe86492



Summary

| | |
|------------------------|----------------------------------|
| Production Name | Cpn10 Rabbit Monoclonal Antibody |
| Description | Rabbit Monoclonal antibody |
| Host | Rabbit |
| Application | WB, FC |
| Reactivity | Human,Rat |

Performance

| | |
|---------------------|--|
| Conjugation | Unconjugated |
| Modification | Unmodified |
| Isotype | IgG |
| Clonality | Monoclonal |
| Form | Liquid |
| Storage | Store at 4°C short term. Aliquot and store at -20°C long term. Avoid freeze/thaw cycles. |
| Buffer | Supplied in 50mM Tris-Glycine(pH 7.4), 0.15M NaCl, 40% Glycerol, 0.01% sodium azide and 0.05% protective protein. Stable for 12 months from date of receipt. |
| Purification | Affinity Purification |

Immunogen

| | |
|--------------------------|--------------------------|
| Gene Name | Cpn10 |
| Alternative Names | EPF; CPN10; GROES; HSP10 |
| Gene ID | 3336 |
| SwissProt ID | P61604. |

Application

| | |
|-------------------------|--|
| Dilution Ratio | WB: 1:1000-1:5000 FC: 1:10-1:100 |
| Molecular Weight | Calculated MW:11 kDa; Observed MW:11 kDa |

Background

This gene encodes a major heat shock protein which functions as a chaperonin. Its structure consists of a heptameric ring

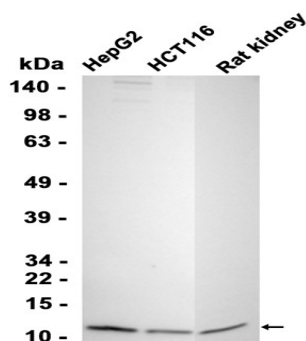
Product Name: Cpn10 Rabbit Monoclonal Antibody
Catalog #: AMRe86492



which binds to another heat shock protein in order to form a symmetric, functional heterodimer which enhances protein folding in an ATP-dependent manner. This gene and its co-chaperonin, HSPD1, are arranged in a head-to-head orientation on chromosome 2. Naturally occurring read-through transcription occurs between this locus and the neighboring locus MOBKL3.[provided by RefSeq, Feb 2011]

Research Area

Image Data



Western blot analysis of extracts from HepG2, HCT116 cells and Rat kidney tissue using AMRe86492 at 1:3000.

Note

For research use only.