

Summary

Production Name	EWSR1 Rabbit Monoclonal Antibody
Description	Rabbit Monoclonal antibody
Host	Rabbit
Application	WB, IHC-P, ICC/IF, FC
Reactivity	Human,Mouse,Rat

Performance

Conjugation	Unconjugated
Modification	Unmodified
Isotype	IgG
Clonality	Monoclonal
Form	Liquid
Storage	Store at 4°C short term. Aliquot and store at -20°C long term. Avoid freeze/thaw cycles.
Buffer	Supplied in 50mM Tris-Glycine(pH 7.4), 0.15M NaCl, 40% Glycerol, 0.01% sodium azide and 0.05% protective protein. Stable for 12 months from date of receipt.
Purification	Affinity Purification

Immunogen

Gene Name	EWSR1
Alternative Names	EWS; EWS-FLI1; bK984G1.4
Gene ID	2130
SwissProt ID	Q01844.

Application

Dilution Ratio	WB: 1:2000-1:20000 IHC-P: 1:200-1:500 ICC/IF: 1:200-1:1000 FC: 1:100
Molecular Weight	Calculated MW:69 kDa; Observed MW:85 kDa

Background

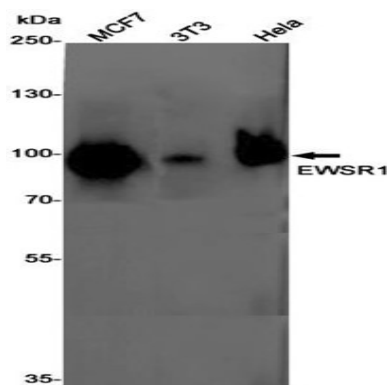
Product Name: EWSR1 Rabbit Monoclonal Antibody
Catalog #: AMRe86491



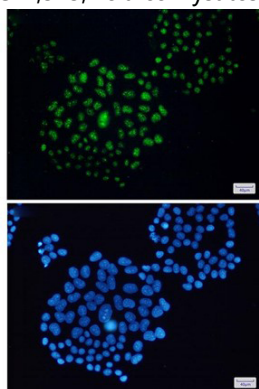
This gene encodes a multifunctional protein that is involved in various cellular processes, including gene expression, cell signaling, and RNA processing and transport. The protein includes an N-terminal transcriptional activation domain and a C-terminal RNA-binding domain. Chromosomal translocations between this gene and various genes encoding transcription factors result in the production of chimeric proteins that are involved in tumorigenesis. These chimeric proteins usually consist of the N-terminal transcriptional activation domain of this protein fused to the C-terminal DNA-binding domain of the transcription factor protein. Mutations in this gene, specifically a t(11;22)(q24;q12) translocation, are known to cause Ewing sarcoma as well as neuroectodermal and various other tumors. Alternative splicing of this gene results in multiple transcript variants. Related pseudogenes have been identified on chromosomes 1 and 14. [provided by RefSeq, Jul 2009]

Research Area

Image Data

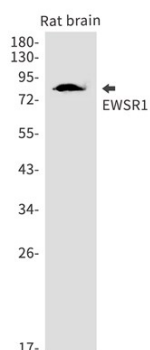


Western blot detection of EWSR1 in MCF7, 3T3, HeLa cell lysates using EWSR1 antibody (1:1000 diluted).

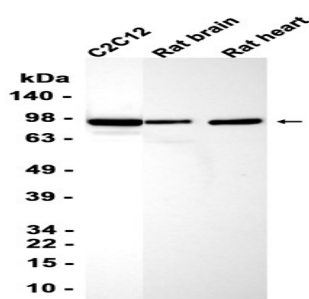


Immunofluorescent analysis of HeLa cells using AMRe86491 antibody (green), and DAPI (blue).

Product Name: EWSR1 Rabbit Monoclonal Antibody
Catalog #: AMRe86491



Western blot analysis of EWSR1 in rat brain lysates using EWSR1 antibody(1:1000 diluted).



Western blot analysis of extracts from C2C12 cells and Rat kidney, Rat heart tissue using AMRe86491 at 1:6000.

Note

For research use only.