

**Product Name: HtrA2/Omi Rabbit Monoclonal Antibody****Catalog #: AMRe86489**

For research use only.

**Summary**

<b>Description</b>	Recombinant rabbit monoclonal antibody
<b>Host</b>	Rabbit
<b>Application</b>	WB,IHC
<b>Reactivity</b>	Human,Mouse,Rat
<b>Conjugation</b>	Unconjugated
<b>Modification</b>	Unmodified
<b>Isotype</b>	IgG
<b>Clonality</b>	Monoclonal
<b>Form</b>	Liquid
<b>Concentration</b>	
<b>Storage</b>	Aliquot and store at -20°C (valid for 12 months). Avoid freeze/thaw cycles.
<b>Shipping</b>	Ice bags
<b>Buffer</b>	Supplied in 50mM Tris-Glycine(pH 7.4), 0.15M NaCl, 40% Glycerol, 0.01% sodium azide and 0.05% protective protein. Stable for 12 months from date of receipt.
<b>Purification</b>	Affinity Purification

**Application**

<b>Dilution Ratio</b>	WB 1:1000-1:5000,IHC 1:100-1:200
<b>Molecular Weight</b>	Calculated MW:48 kDa; Observed MW:36 kDa

**Antigen Information**

<b>Gene Name</b>	HtrA2/Omi
<b>Alternative Names</b>	OMI; MGCA8; PARK13; PRSS25
<b>Gene ID</b>	27429
<b>SwissProt ID</b>	O43464
<b>Immunogen</b>	A synthetic peptide of human HtrA2/Omi

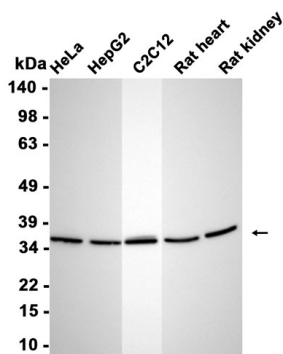
**Background**

This gene encodes a serine protease. The protein has been localized in the endoplasmic reticulum and interacts with an alternatively spliced form of mitogen-activated protein kinase 14. The protein has also been localized to the mitochondria with

release to the cytosol following apoptotic stimulus. The protein is thought to induce apoptosis by binding the apoptosis inhibitory protein baculoviral IAP repeat-containing 4. Nuclear localization of this protein has also been observed. Alternate splicing of this gene results in multiple transcript variants encoding different isoforms. [provided by RefSeq, Mar 2016]

## Research Area

## Image Data



Western blot analysis of extracts from HeLa , HepG2 , C2C12 cells and Rat heart, Rat kidney tissue using HtrA2/Omi Rabbit Monoclonal Antibody at 1:5000.