

---

**Product Name: ICAM1 Rabbit Monoclonal Antibody****Catalog #: AMRe86488**

For research use only.

**Summary**

<b>Description</b>	Recombinant rabbit monoclonal antibody
<b>Host</b>	Rabbit
<b>Application</b>	WB,IHC
<b>Reactivity</b>	Rat
<b>Conjugation</b>	Unconjugated
<b>Modification</b>	Unmodified
<b>Isotype</b>	IgG
<b>Clonality</b>	Monoclonal
<b>Form</b>	Liquid
<b>Concentration</b>	2.3mg/ml. The concentration of this product may be batch-dependent.
<b>Storage</b>	Aliquot and store at -20°C (valid for 12 months). Avoid freeze/thaw cycles.
<b>Shipping</b>	Ice bags
<b>Buffer</b>	Supplied in 50mM Tris-Glycine(pH 7.4), 0.15M NaCl, 40% Glycerol, 0.01% sodium azide and 0.05% protective protein. Stable for 12 months from date of receipt.
<b>Purification</b>	Affinity Purification

**Application**

<b>Dilution Ratio</b>	WB 1:1000-1:5000,IHC 1:200-1:2000
<b>Molecular Weight</b>	Calculated MW:60 kDa; Observed MW:90-110 kDa

**Antigen Information**

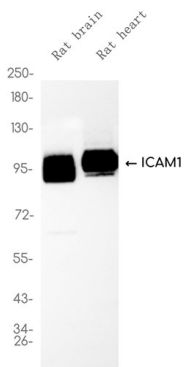
<b>Gene Name</b>	ICAM1
<b>Alternative Names</b>	CD54; Ly-47; Icam-1; MALA-2
<b>Gene ID</b>	25464
<b>SwissProt ID</b>	Q00238
<b>Immunogen</b>	Recombinant protein of rat ICAM1

**Background**

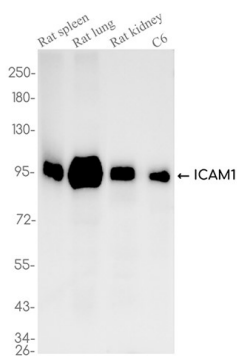
This gene encodes an integral membrane protein that binds leukocyte adhesion protein LFA-1. It participates in the innate immune response. [provided by RefSeq, Aug 2016]

## Research Area

## Image Data



Western blot analysis of extracts from Rat brain , Rat heart tissue using ICAM1 Rabbit Monoclonal Antibody at 1:1000.



Western blot analysis of extracts from Rat spleen, Rat lung, Rat kidney tissue using AMRe86488 at 1:1000.