

Summary

Production Name	LRP1 Rabbit Monoclonal Antibody
Description	Rabbit Monoclonal antibody
Host	Rabbit
Application	WB, IHC-P, ICC/IF, FC, IP
Reactivity	Human,Mouse,Rat

Performance

Conjugation	Unconjugated
Modification	Unmodified
Isotype	IgG
Clonality	Monoclonal
Form	Liquid
Storage	Store at 4°C short term. Aliquot and store at -20°C long term. Avoid freeze/thaw cycles.
Buffer	Supplied in 50mM Tris-Glycine(pH 7.4), 0.15M NaCl, 40% Glycerol, 0.01% sodium azide and 0.05% protective protein. Stable for 12 months from date of receipt.
Purification	Affinity Purification

Immunogen

Gene Name	LRP1
Alternative Names	APR; KPA; LRP; A2MR; CD91; APOER; LRP1A; TGFBR5; IGFBP3R
Gene ID	4035
SwissProt ID	Q07954.

Application

Dilution Ratio	WB: 1:2000-1:20000 IHC-P: 1:50-1:100 ICC/IF: 1:100 FC: 1:100 IP: 1:20-1:50
Molecular Weight	Calculated MW:85 kDa; Observed MW:85 kDa

Background

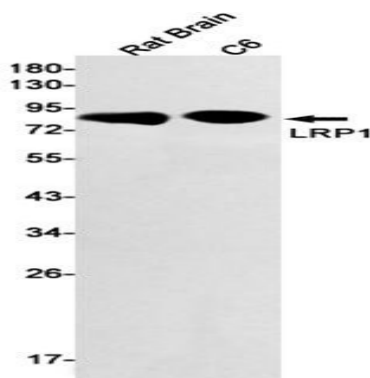
Product Name: LRP1 Rabbit Monoclonal Antibody
Catalog #: AMRe86486



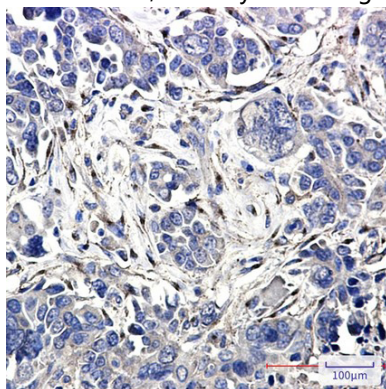
This gene encodes a member of the low-density lipoprotein receptor family of proteins. The encoded preproprotein is proteolytically processed by furin to generate 515 kDa and 85 kDa subunits that form the mature receptor (PMID: 8546712). This receptor is involved in several cellular processes, including intracellular signaling, lipid homeostasis, and clearance of apoptotic cells. In addition, the encoded protein is necessary for the alpha 2-macroglobulin-mediated clearance of secreted amyloid precursor protein and beta-amyloid, the main component of amyloid plaques found in Alzheimer patients. Expression of this gene decreases with age and has been found to be lower than controls in brain tissue from Alzheimer's disease patients. [provided by RefSeq, Oct 2015]

Research Area

Image Data

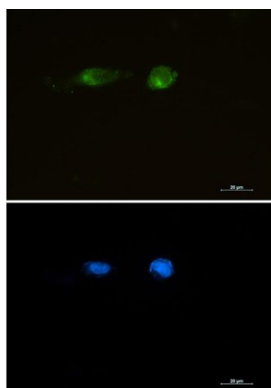


Western blot detection of LRP1 in Rat Brain, C6 cell lysates using LRP1 antibody (1:1000 diluted).

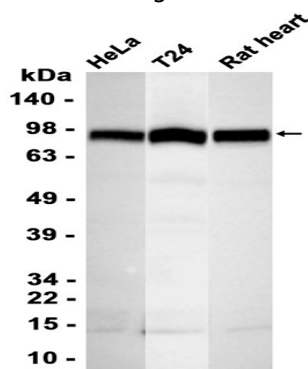


Immunohistochemical analysis of paraffin-embedded human Cholangiocarcinoma using AMRe86486 antibody.

Product Name: LRP1 Rabbit Monoclonal Antibody
Catalog #: AMRe86486



Immunofluorescent analysis of U87-MG cells using AMRe86486 antibody (green), and DAPI (blue).



Western blot analysis of extracts from HeLa, T24 cells and Rat heart tissue using AMRe86486 at 1:2000.

Note

For research use only.