

**Product Name: LRP5 Rabbit Monoclonal Antibody**  
**Catalog #: AMRe86485**



## Summary

<b>Production Name</b>	LRP5 Rabbit Monoclonal Antibody
<b>Description</b>	Rabbit Monoclonal antibody
<b>Host</b>	Rabbit
<b>Application</b>	WB, IP
<b>Reactivity</b>	Human,Mouse,Rat

## Performance

<b>Conjugation</b>	Unconjugated
<b>Modification</b>	Unmodified
<b>Isotype</b>	IgG
<b>Clonality</b>	Monoclonal
<b>Form</b>	Liquid
<b>Storage</b>	Store at 4°C short term. Aliquot and store at -20°C long term. Avoid freeze/thaw cycles.
<b>Buffer</b>	Supplied in 50mM Tris-Glycine(pH 7.4), 0.15M NaCl, 40% Glycerol, 0.01% sodium azide and 0.05% protective protein. Stable for 12 months from date of receipt.
<b>Purification</b>	Affinity Purification

## Immunogen

<b>Gene Name</b>	LRP5
<b>Alternative Names</b>	HBM; LR3; OPS; EVR1; EVR4; LRP7; OPPG; BMND1; LRP-5; LRP-7; OPTA1; PCLD4; VBCH2
<b>Gene ID</b>	4041
<b>SwissProt ID</b>	O75197.

## Application

<b>Dilution Ratio</b>	WB: 1:1000-1:5000 IP: 1:20-1:50
<b>Molecular Weight</b>	Calculated MW:179 kDa; Observed MW:200 kDa

## Background

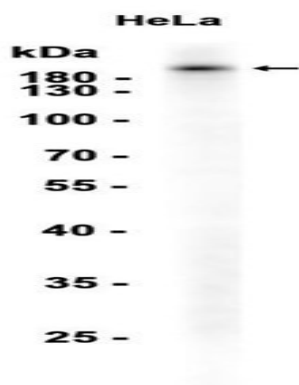
**Product Name: LRP5 Rabbit Monoclonal Antibody**  
**Catalog #: AMRe86485**



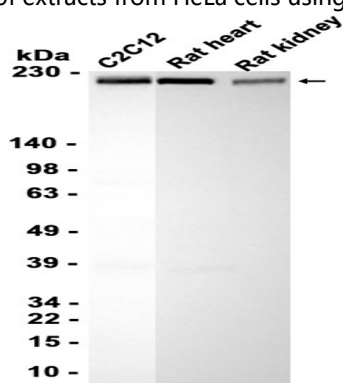
This gene encodes a transmembrane low-density lipoprotein receptor that binds and internalizes ligands in the process of receptor-mediated endocytosis. This protein also acts as a co-receptor with Frizzled protein family members for transducing signals by Wnt proteins and was originally cloned on the basis of its association with type 1 diabetes mellitus in humans. This protein plays a key role in skeletal homeostasis and many bone density related diseases are caused by mutations in this gene. Mutations in this gene also cause familial exudative vitreoretinopathy. Alternative splicing results in multiple transcript variants. [provided by RefSeq, May 2014]

## Research Area

## Image Data



Western blot analysis of extracts from HeLa cells using AMRe86485 at 1:1000.



Western blot analysis of extracts from C2C12 cells and Rat heart, Rat kidney tissue using AMRe86485 at 1:1000.

## Note

For research use only.