
Product Name: Lysozyme Rabbit Monoclonal Antibody**Catalog #: AMRe86484**

For research use only.

Summary

Description	Recombinant rabbit monoclonal antibody
Host	Rabbit
Application	WB,IHC,ICC/IF
Reactivity	Human,Mouse
Conjugation	Unconjugated
Modification	Unmodified
Isotype	IgG
Clonality	Monoclonal
Form	Liquid
Concentration	0.09mg/ml. The concentration of this product may be batch-dependent.
Storage	Aliquot and store at -20°C (valid for 12 months). Avoid freeze/thaw cycles.
Shipping	Ice bags
Buffer	Supplied in 50mM Tris-Glycine(pH 7.4), 0.15M NaCl, 40% Glycerol, 0.01% sodium azide and 0.05% protective protein. Stable for 12 months from date of receipt.
Purification	Affinity Purification

Application

Dilution Ratio	WB 1:2000-1:20000,IHC 1:500-1:5000,ICC/IF 1:100-1:200
Molecular Weight	Calculated MW:17 kDa; Observed MW:17 kDa

Antigen Information

Gene Name	Lysozyme
Alternative Names	LZM; LYZF1
Gene ID	4069
SwissProt ID	P61626
Immunogen	A synthetic peptide of human Lysozyme

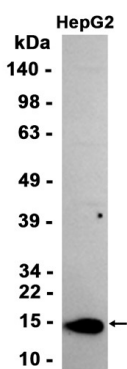
Background

This gene encodes human lysozyme, whose natural substrate is the bacterial cell wall peptidoglycan (cleaving the beta[1-4]glycosidic linkages between N-acetylmuramic acid and N-acetylglucosamine). Lysozyme is one of the antimicrobial agents

found in human milk, and is also present in spleen, lung, kidney, white blood cells, plasma, saliva, and tears. The protein has antibacterial activity against a number of bacterial species. Missense mutations in this gene have been identified in heritable renal amyloidosis. [provided by RefSeq, Oct 2014]

Research Area

Image Data



Western blot analysis of extracts from HepG2 cells using Lysozyme Rabbit Monoclonal Antibody at 1:2000.