

Product Name: Peripherin Rabbit Monoclonal Antibody**Catalog #: AMRe86482**

For research use only.

Summary

Description	Recombinant rabbit monoclonal antibody
Host	Rabbit
Application	WB,IHC,ICC/IF,FC,IP
Reactivity	Human,Mouse,Rat
Conjugation	Unconjugated
Modification	Unmodified
Isotype	IgG
Clonality	Monoclonal
Form	Liquid
Concentration	
Storage	Aliquot and store at -20°C (valid for 12 months). Avoid freeze/thaw cycles.
Shipping	Ice bags
Buffer	Supplied in 50mM Tris-Glycine(pH 7.4), 0.15M NaCl, 40% Glycerol, 0.01% sodium azide and 0.05% protective protein. Stable for 12 months from date of receipt.
Purification	Affinity Purification

Application

Dilution Ratio	WB 1:500-1:2000,IHC 1:200-1:2000,ICC/IF 1:100-1:200,FC 1:20-1:50,IP 1:20-1:50
Molecular Weight	Calculated MW:54 kDa; Observed MW:58 kDa

Antigen Information

Gene Name	Peripherin
Alternative Names	NEF4; PRPH1
Gene ID	5630
SwissProt ID	P41219
Immunogen	A synthetic peptide of human Peripherin

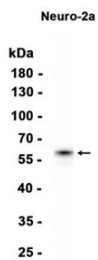
Background

This gene encodes a cytoskeletal protein found in neurons of the peripheral nervous system. The encoded protein is a type III intermediate filament protein with homology to other cytoskeletal proteins such as desmin, and is a different protein that the

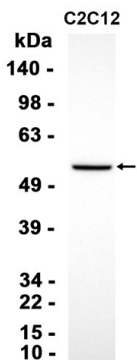
peripherin found in photoreceptors. Mutations in this gene have been associated with susceptibility to amyotrophic lateral sclerosis. [provided by RefSeq, Jul 2008]

Research Area

Image Data



Western blot analysis of extracts from Neuro-2a cells using Peripherin Rabbit Monoclonal Antibody at 1:5000.



Western blot analysis of extracts from C2C12 cells using AMRe86482 at 1:1000.