

Summary

Production Name	TSPO Rabbit Monoclonal Antibody
Description	Rabbit Monoclonal antibody
Host	Rabbit
Application	WB, IHC-P, ICC/IF, FC, IP
Reactivity	Human,Mouse

Performance

Conjugation	Unconjugated
Modification	Unmodified
Isotype	IgG
Clonality	Monoclonal
Form	Liquid
Storage	Store at 4°C short term. Aliquot and store at -20°C long term. Avoid freeze/thaw cycles.
Buffer	Supplied in 50mM Tris-Glycine(pH 7.4), 0.15M NaCl, 40% Glycerol, 0.01% sodium azide and 0.05% protective protein. Stable for 12 months from date of receipt.
Purification	Affinity Purification

Immunogen

Gene Name	TSPO
Alternative Names	DBI; IBP; MBR; PBR; PBS; BPBS; BZRP; PKBS; PTBR; mDRC; pk18
Gene ID	706
SwissProt ID	P30536.

Application

Dilution Ratio	WB: 1:2000-1:20000 IHC-P: 1:100-1:1000 ICC/IF: 1:200-1:1000 FC: 1:50-1:200 IP: 1:10-1:100
Molecular Weight	Calculated MW:19 kDa; Observed MW:19 kDa

Product Name: TSPO Rabbit Monoclonal Antibody
Catalog #: AMRe86481

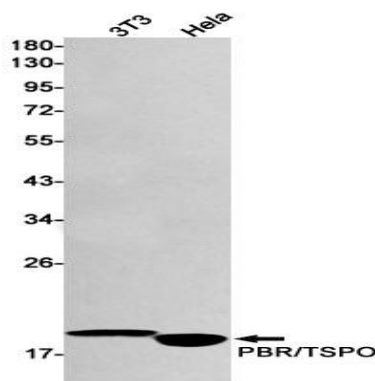


Background

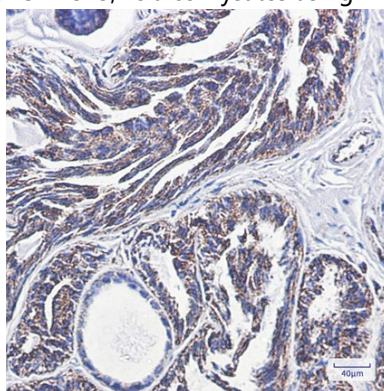
Present mainly in the mitochondrial compartment of peripheral tissues, the protein encoded by this gene interacts with some benzodiazepines and has different affinities than its endogenous counterpart. The protein is a key factor in the flow of cholesterol into mitochondria to permit the initiation of steroid hormone synthesis. Alternatively spliced transcript variants have been reported; one of the variants lacks an internal exon and is considered non-coding, and the other variants encode the same protein. [provided by RefSeq, Feb 2012]

Research Area

Image Data

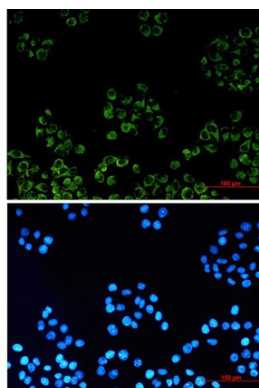


Western blot detection of PBR/TSPO in 3T3, HeLa cell lysates using PBR/TSPO antibody (1:1000 diluted).

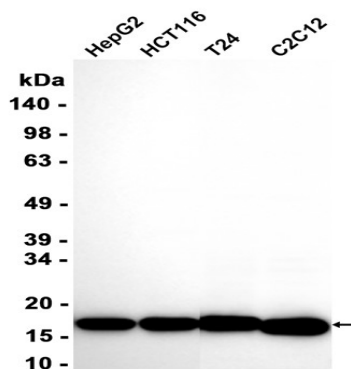


Immunohistochemical analysis of paraffin-embedded human breast cancer using AMRe86481 antibody.

Product Name: TSPO Rabbit Monoclonal Antibody
Catalog #: AMRe86481



Immunofluorescent analysis of HeLa cells using AMRe86481 antibody (green), and DAPI (blue).



Western blot analysis of extracts from HepG2, HCT116, T24, C2C12 cells using AMRe86481 at 1:2000.

Note

For research use only.