

Product Name: SMARCD2 Rabbit Monoclonal Antibody
Catalog #: AMRe86472



Summary

Production Name	SMARCD2 Rabbit Monoclonal Antibody
Description	Rabbit Monoclonal antibody
Host	Rabbit
Application	WB, IHC-P, FC, IP
Reactivity	Human, Mouse, Rat

Performance

Conjugation	Unconjugated
Modification	Unmodified
Isotype	IgG
Clonality	Monoclonal
Form	Liquid
Storage	Store at 4°C short term. Aliquot and store at -20°C long term. Avoid freeze/thaw cycles.
Buffer	Supplied in 50mM Tris-Glycine(pH 7.4), 0.15M NaCl, 40% Glycerol, 0.01% sodium azide and 0.05% protective protein. Stable for 12 months from date of receipt.
Purification	Affinity Purification

Immunogen

Gene Name	SMARCD2
Alternative Names	SGD2; Rsc6p; BAF60B; CRACD2; PRO2451
Gene ID	6603, 83796, 83833
SwissProt ID	Q92925, Q99JR8, O54772.

Application

Dilution Ratio	WB: 1:1000 IHC-P: 1:100-1:200 FC: 1:200-1:500 IP: 1:20-1:50
Molecular Weight	Calculated MW:59 kDa; Observed MW:59 kDa

Background

The protein encoded by this gene is a member of the SWI/SNF family of proteins, whose members display helicase and

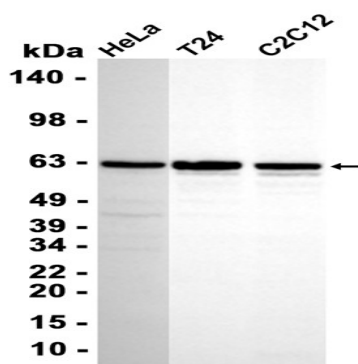
Product Name: SMARCD2 Rabbit Monoclonal Antibody
Catalog #: AMRe86472



ATPase activities and which are thought to regulate transcription of certain genes by altering the chromatin structure around those genes. The encoded protein is part of the large ATP-dependent chromatin remodeling complex SNF/SWI and has sequence similarity to the yeast Swp73 protein. Alternatively spliced transcript variants encoding different isoforms have been found for this gene. [provided by RefSeq, Jul 2008]

Research Area

Image Data



Western blot analysis of extracts from HeLa, T24, C2C12 cells using AMRe86472 at 1:1000.

Note

For research use only.