

**Product Name: CD2 Rabbit Monoclonal Antibody**  
**Catalog #: AMRe86468**



## Summary

<b>Production Name</b>	CD2 Rabbit Monoclonal Antibody
<b>Description</b>	Rabbit Monoclonal antibody
<b>Host</b>	Rabbit
<b>Application</b>	WB, IHC-P, FC, IP
<b>Reactivity</b>	Human

## Performance

<b>Conjugation</b>	Unconjugated
<b>Modification</b>	Unmodified
<b>Isotype</b>	IgG
<b>Clonality</b>	Monoclonal
<b>Form</b>	Liquid
<b>Storage</b>	Store at 4°C short term. Aliquot and store at -20°C long term. Avoid freeze/thaw cycles.
<b>Buffer</b>	Supplied in 50mM Tris-Glycine(pH 7.4), 0.15M NaCl, 40% Glycerol, 0.01% sodium azide and 0.05% protective protein. Stable for 12 months from date of receipt.
<b>Purification</b>	Affinity Purification

## Immunogen

<b>Gene Name</b>	CD2
<b>Alternative Names</b>	T11; SRBC; LFA-2
<b>Gene ID</b>	914
<b>SwissProt ID</b>	P06729.

## Application

<b>Dilution Ratio</b>	WB: 1:1000-1:5000 IHC-P: 1:200-1:500 FC: 1:200-1:1000 IP: 1:10-1:100
<b>Molecular Weight</b>	Calculated MW:40 kDa; Observed MW:48-65 kDa

## Background

The protein encoded by this gene is a surface antigen found on all peripheral blood T-cells. The encoded protein interacts

**Product Name: CD2 Rabbit Monoclonal Antibody**  
**Catalog #: AMRe86468**

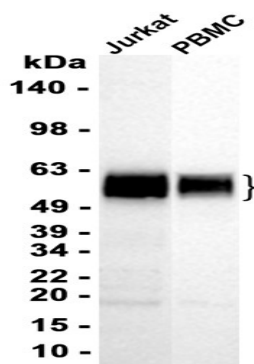
---



with LFA3 (CD58) on antigen presenting cells to optimize immune recognition. A locus control region (LCR) has been found in the 3' flanking sequence of this gene. [provided by RefSeq, Jun 2016]

## Research Area

## Image Data



Western blot analysis of extracts from Jurkat, PBMC cells using AMRe86468 at 1:1000.

## Note

For research use only.