

**Product Name: CD36 Rabbit Monoclonal Antibody****Catalog #: AMRe86467**

For research use only.

**Summary**

<b>Description</b>	Recombinant rabbit monoclonal antibody
<b>Host</b>	Rabbit
<b>Application</b>	WB,IHC,ICC/IF,FC
<b>Reactivity</b>	Human,Mouse,Rat
<b>Conjugation</b>	Unconjugated
<b>Modification</b>	Unmodified
<b>Isotype</b>	IgG
<b>Clonality</b>	Monoclonal
<b>Form</b>	Liquid
<b>Concentration</b>	
<b>Storage</b>	Aliquot and store at -20°C (valid for 12 months). Avoid freeze/thaw cycles.
<b>Shipping</b>	Ice bags
<b>Buffer</b>	Supplied in 50mM Tris-Glycine(pH 7.4), 0.15M NaCl, 40% Glycerol, 0.01% sodium azide and 0.05% protective protein. Stable for 12 months from date of receipt.
<b>Purification</b>	Affinity Purification

**Application**

<b>Dilution Ratio</b>	WB 1:500-1:2000,IHC 1:200-1:1000,ICC/IF 1:20-1:50,FC 1:20-1:50
<b>Molecular Weight</b>	Calculated MW:53 kDa; Observed MW:70-110 kDa

**Antigen Information**

<b>Gene Name</b>	CD36
<b>Alternative Names</b>	FAT; GP4; GP3B; GPIV; CHDS7; PASIV; SCARB3; BDPLT10
<b>Gene ID</b>	948
<b>SwissProt ID</b>	P16671
<b>Immunogen</b>	A synthetic peptide of human CD36

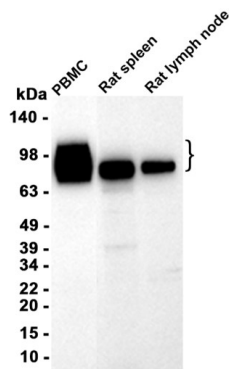
**Background**

The protein encoded by this gene is the fourth major glycoprotein of the platelet surface and serves as a receptor for thrombospondin in platelets and various cell lines. Since thrombospondins are widely distributed proteins involved in a variety

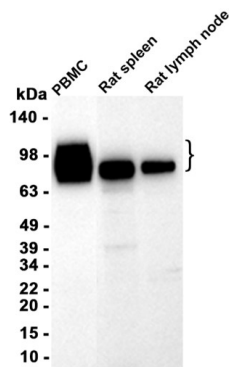
of adhesive processes, this protein may have important functions as a cell adhesion molecule. It binds to collagen, thrombospondin, anionic phospholipids and oxidized LDL. It directly mediates cytoadherence of *Plasmodium falciparum* parasitized erythrocytes and it binds long chain fatty acids and may function in the transport and/or as a regulator of fatty acid transport. Mutations in this gene cause platelet glycoprotein deficiency. Multiple alternatively spliced transcript variants have been found for this gene. [provided by RefSeq, Feb 2014]

## Research Area

## Image Data



Western blot analysis of extracts from U937 cells using CD36 Rabbit Monoclonal Antibody at 1:1000.



Western blot analysis of extracts from PBMC cells and Rat spleen, Rat lymph node tissue using AMRe86467 at 1:1000.