
Product Name: CD46 Rabbit Monoclonal Antibody**Catalog #: AMRe86466**

For research use only.

Summary

Description	Recombinant rabbit monoclonal antibody
Host	Rabbit
Application	WB,IHC
Reactivity	Human
Conjugation	Unconjugated
Modification	Unmodified
Isotype	IgG
Clonality	Monoclonal
Form	Liquid
Concentration	
Storage	Aliquot and store at -20°C (valid for 12 months). Avoid freeze/thaw cycles.
Shipping	Ice bags
Buffer	Supplied in 50mM Tris-Glycine(pH 7.4), 0.15M NaCl, 40% Glycerol, 0.01% sodium azide and 0.05% protective protein. Stable for 12 months from date of receipt.
Purification	Affinity Purification

Application

Dilution Ratio	WB 1:1000-1:5000,IHC 1:200-1:1000
Molecular Weight	Calculated MW:44 kDa; Observed MW:50-70 kDa

Antigen Information

Gene Name	CD46
Alternative Names	MCP; TLX; AHUS2; MIC10; TRA2.10
Gene ID	4179
SwissProt ID	P15529
Immunogen	A synthetic peptide of human CD46

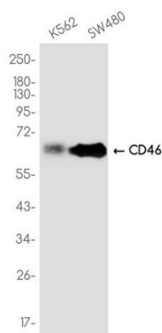
Background

The protein encoded by this gene is a type I membrane protein and is a regulatory part of the complement system. The encoded protein has cofactor activity for inactivation of complement components C3b and C4b by serum factor I, which

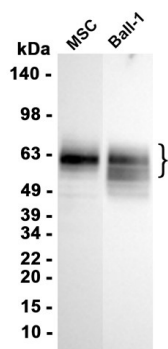
protects the host cell from damage by complement. In addition, the encoded protein can act as a receptor for the Edmonston strain of measles virus, human herpesvirus-6, and type IV pili of pathogenic *Neisseria*. Finally, the protein encoded by this gene may be involved in the fusion of the spermatozoa with the oocyte during fertilization. Mutations at this locus have been associated with susceptibility to hemolytic uremic syndrome. Alternatively spliced transcript variants encoding different isoforms have been described. [provided by RefSeq, Jun 2010]

Research Area

Image Data



Western blot analysis of extracts from K562 , SW480 cells using CD46 Rabbit Monoclonal Antibody at 1:1000.



Western blot analysis of extracts from MSC , Ball-1 cells using AMRe86466 at 1:1000.