

Product Name: SOD2 Rabbit Monoclonal Antibody**Catalog #: AMRe86455**

For research use only.

Summary

Description	Recombinant rabbit monoclonal antibody
Host	Rabbit
Application	WB,IHC
Reactivity	Human,Mouse,Rat
Conjugation	Unconjugated
Modification	Unmodified
Isotype	IgG
Clonality	Monoclonal
Form	Liquid
Concentration	
Storage	Aliquot and store at -20°C (valid for 12 months). Avoid freeze/thaw cycles.
Shipping	Ice bags
Buffer	Supplied in 50mM Tris-Glycine(pH 7.4), 0.15M NaCl, 40% Glycerol, 0.01% sodium azide and 0.05% protective protein. Stable for 12 months from date of receipt.
Purification	Affinity Purification

Application

Dilution Ratio	WB 1:500-1:2000,IHC 1:100-1:200
Molecular Weight	Calculated MW:25 kDa; Observed MW:25 kDa

Antigen Information

Gene Name	SOD2
Alternative Names	IPOB; IPO-B; MNSOD; MVCD6; Mn-SOD
Gene ID	6648
SwissProt ID	P04179
Immunogen	A synthetic peptide of human SOD2

Background

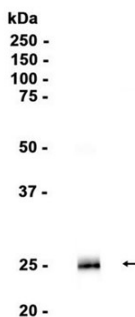
This gene is a member of the iron/manganese superoxide dismutase family. It encodes a mitochondrial protein that forms a homotetramer and binds one manganese ion per subunit. This protein binds to the superoxide byproducts of oxidative

phosphorylation and converts them to hydrogen peroxide and diatomic oxygen. Mutations in this gene have been associated with idiopathic cardiomyopathy (IDC), premature aging, sporadic motor neuron disease, and cancer. Alternative splicing of this gene results in multiple transcript variants. A related pseudogene has been identified on chromosome 1. [provided by RefSeq, Apr 2016]

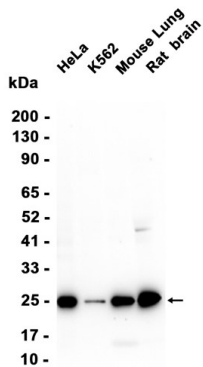
Research Area

Image Data

Mouse brain



Western blot analysis of extracts from Mouse brain tissue using SOD2 Rabbit Monoclonal Antibody at 1:1000.



Western blot analysis of extracts from HeLa, K562 cells and Mouse lung, Rat brain tissue using AMRe86455 at 1:500.