

## Summary

<b>Production Name</b>	MCM7 Rabbit Monoclonal Antibody
<b>Description</b>	Recombinant rabbit monoclonal antibody
<b>Host</b>	Rabbit
<b>Application</b>	WB, IHC-P, ICC/IF, FC, IP
<b>Reactivity</b>	Human,Mouse,Rat

## Performance

<b>Conjugation</b>	Unconjugated
<b>Modification</b>	Unmodified
<b>Isotype</b>	IgG
<b>Clonality</b>	Monoclonal
<b>Form</b>	Liquid
<b>Storage</b>	Store at 4°C short term. Aliquot and store at -20°C long term. Avoid freeze/thaw cycles.
<b>Buffer</b>	Supplied in 50mM Tris-Glycine(pH 7.4), 0.15M NaCl, 40% Glycerol, 0.01% sodium azide and 0.05% protective protein. Stable for 12 months from date of receipt.
<b>Purification</b>	Affinity Purification

## Immunogen

<b>Gene Name</b>	MCM7
<b>Alternative Names</b>	MCM2; CDC47; P85MCM; P1CDC47; PNAS146; PPP1R104; P1.1-MCM3
<b>Gene ID</b>	4176
<b>SwissProt ID</b>	P33993.

## Application

<b>Dilution Ratio</b>	WB: 1:1000 IHC-P: 1:50 ICC/IF: 1:50 FC: 1:20 IP: 1:20
<b>Molecular Weight</b>	Calculated MW:81 kDa; Observed MW:81 kDa

## Background

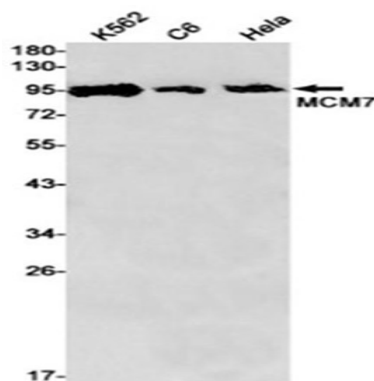
**Product Name: MCM7 Rabbit Monoclonal Antibody**  
**Catalog #: AMRe86453**



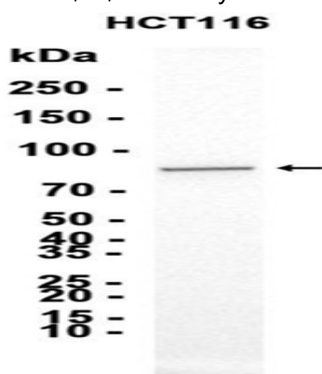
The protein encoded by this gene is one of the highly conserved mini-chromosome maintenance proteins (MCM) that are essential for the initiation of eukaryotic genome replication. The hexameric protein complex formed by the MCM proteins is a key component of the pre-replication complex (pre\_RC) and may be involved in the formation of replication forks and in the recruitment of other DNA replication related proteins. The MCM complex consisting of this protein and MCM2, 4 and 6 proteins possesses DNA helicase activity, and may act as a DNA unwinding enzyme. Cyclin D1-dependent kinase, CDK4, is found to associate with this protein, and may regulate the binding of this protein with the tumorsuppressor protein RB1/RB. Alternatively spliced transcript variants encoding distinct isoforms have been reported. [provided by RefSeq, Jul 2008]

## Research Area

## Image Data

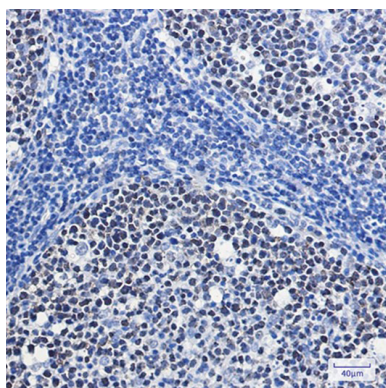


Western blot detection of MCM7 in K562,C6,HeLa cell lysates using MCM7 antibody(1:1000 diluted).

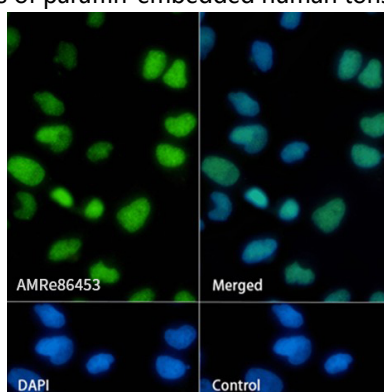


Western blot analysis of extracts from HCT116 cells using AMRe86453 at 1:2000.

**Product Name: MCM7 Rabbit Monoclonal Antibody**  
**Catalog #: AMRe86453**



Immunohistochemical analysis of paraffin-embedded human tonsil using AMRe86453 antibody.



Immunofluorescence analysis of HeLa cells labelling MCM7 with AMRe86453.

## **Note**

For research use only.