
Product Name: HP1 gamma Rabbit Monoclonal Antibody**Catalog #: AMRe86450**

For research use only.

Summary

Description	Recombinant rabbit monoclonal antibody
Host	Rabbit
Application	WB,IHC,ICC/IF,FC
Reactivity	Human,Mouse,Rat
Conjugation	Unconjugated
Modification	Unmodified
Isotype	IgG
Clonality	Monoclonal
Form	Liquid
Concentration	
Storage	Aliquot and store at -20°C (valid for 12 months). Avoid freeze/thaw cycles.
Shipping	Ice bags
Buffer	Supplied in 50mM Tris-Glycine(pH 7.4), 0.15M NaCl, 40% Glycerol, 0.01% sodium azide and 0.05% protective protein. Stable for 12 months from date of receipt.
Purification	Affinity Purification

Application

Dilution Ratio	WB 1:500-1:2000,IHC 1:100-1:200,ICC/IF 1:100-1:200,FC 1:50-1:100
Molecular Weight	Calculated MW:21 kDa; Observed MW:21 kDa

Antigen Information

Gene Name	HP1 gamma
Alternative Names	HECH; HP1-GAMMA; HP1Hs-gamma
Gene ID	11335
SwissProt ID	P23198
Immunogen	A synthetic peptide of mouse HP1 gamma

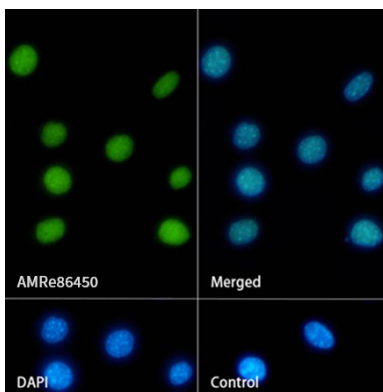
Background

At the nuclear envelope, the nuclear lamina and heterochromatin are adjacent to the inner nuclear membrane. The protein encoded by this gene binds DNA and is a component of heterochromatin. This protein also can bind lamin B receptor, an

integral membrane protein found in the inner nuclear membrane. The dual binding functions of the encoded protein may explain the association of heterochromatin with the inner nuclear membrane. This protein binds histone H3 tails methylated at Lys-9 sites. This protein is also recruited to sites of ultraviolet-induced DNA damage and double-strand breaks. Two transcript variants encoding the same protein but differing in the 5' UTR, have been found for this gene.[provided by RefSeq, Mar 2011]

Research Area

Image Data



Immunofluorescence analysis of NIH/3T3 cells labelling HP1 gamma with HP1 gamma Rabbit Monoclonal Antibody.